



Wetaskiwin  
HEALTH FOUNDATION



35 YEARS OF  
*Foundation  
History*  
1986-2021

COMPILED BY: RACHEL KNUDSEN





35 YEARS OF  
*Foundation*  
*History*  
1986-2021





Wetaskiwin Hospital & Care Centre, July 2021





35 YEARS OF  
*Foundation  
History*  
1986-2021

COMPILED BY: RACHEL KNUDSEN





Wetaskiwin Hospital & Care Centre

Copyright © Wetaskiwin Health Foundation, 2021

All rights reserved.



TABLE OF

# CONTENTS

---

07	<b>Foreword</b> <i>Executive Director John Strong</i>
09	<b>Introduction</b> <i>The Wetaskiwin Health Foundation</i>
11	<b>Founding Era</b> <i>1986-1999</i>
29	<b>David Thompson Health Trust Era</b> <i>2000-2008</i>
43	<b>Campaign Era</b> <i>2008-2015</i>
55	<b>Modern Era</b> <i>2015-2021</i>
69	<b>Conclusion</b>



12th Annual WHF Barn Dance, 2019





WHF EXECUTIVE  
DIRECTOR

# Foreword

---

John Strong at 12th Annual  
Barn Dance, 2019

## IT IS WITH GREAT

pleasure that I see this book come to light. It has been a vision of mine for years. As the Executive Director of the Wetaskiwin Health Foundation I saw a need for us to tell our story. I am grateful to all those who have worked on this project to make it a reality. I am extremely proud of the work we do here at the Foundation and of the work that has been done by all who

have preceded me. Our staff, volunteers, and donors are amazing and have accomplished great things to enhance healthcare in this community. It is time we stepped to the forefront and let everyone know what has been done. It is my personal wish that you will be inspired and motivated by this book. I love the history and story we have to tell and hope you will too.

**JOHN STRONG**

Executive Director  
Wetaskiwin Health Foundation  
August 2021



Palliative Suite, Wetaskiwin Hospital & Care Centre



## WETASKIWIN HEALTH FOUNDATION

# Introduction

---

### THE WETASKIWIN

Health Foundation (WHF) saw its beginning when a group of individuals within the community recognized a need to bring increased support and resources into local healthcare services. The vision, mission, and goals of the Foundation over the years have been aligned with this purpose.

Through the generous support and donations of numerous individuals, community groups, and businesses, healthcare in Wetaskiwin has flourished.

Within this book, the history of the Wetaskiwin Health Foundation has been divided into four sections to

reflect different eras that have guided their organization, direction, and happenings over the years. The Founding Era (1986-1999) documents the beginnings of the Foundation when it was known as the Wetaskiwin Hospital Foundation. The David Thompson Health Trust Era (2000-2008) outlines major organizational changes that occurred, and the Campaign Era (2008-2015) marks a new direction for the Foundation in its fundraising efforts. The Modern Era (2015-2021) is distinguished as the current era, which is run by Executive Director John Strong.



All sections within this book outline a general timeline of events, list major donors, equipment purchases, board members, and staff from that timeframe. The contents of this book are taken from materials (records & photographs) that WHF staff have kept and cared for over the years. It is important to note that this is not a complete history of the Foundation, but a general history taken only from various records that have been preserved over time.



The Wetaskiwin Hospital & Care Centre (above),  
WHF Donor Wall (below)







1986-1999

# Founding Era

---

WHF Executive Director  
Jack Ensign, 1998

## THE CURRENT

Wetaskiwin Health Foundation (WHF) received its charitable designation under the name Wetaskiwin Hospital Foundation in May 1986. The board consisted of five founding members and its first Executive Director, Jack Ensign.

The Wetaskiwin Hospital Foundation had a separate board of directors, three of which were members of the Wetaskiwin Hospital Board, and two were from the community at large. Reno Gauthier (Chairman) was an active member of several service clubs, as well as a local businessman. Dorothy French (Vice Chairman) was

also Vice Chairman of the Hospital Board at that time, and the Chairman of the Wetoka Health Unit. Frank Dyck was a former RCMP officer, local businessman, and former Mayor of Wetaskiwin. Clayton Monaghan was the Chairman of the Hospital Board, a local businessman, and the County Reeve. Finally, Hank Colborne was a local businessman, a Trustee and Chairman of the Provincial Research Trust.

A large bequest (over \$139,000) from long-time Wetaskiwin resident Leonard Brzezinski (1912-1979) allowed the Foundation to begin operations in 1986. At the launch ceremony of the

Wetaskiwin Hospital Foundation on December 5, 1986, Executive Director Jack Ensign stated, "The Wetaskiwin Hospital Foundation's sole objective is to raise money for the Wetaskiwin Hospital District, and to ensure that that money is applied towards equipment and programs which reflect the donors own interests, as well as fulfilling the needs of the community". Minister Don Sparrow was also present at the launch and said, "The people of the Wetaskiwin area should be proud of the initiative once again demonstrated by their local hospital in searching for new and innovative means to find the funds necessary to supplement those available through standard government funding." Likewise, Chairman Reno Gauthier stated that, "Our goal is to provide the people of our community with a means to invest in their community health care system and to know that their contribution will be effectively used whether large or small".

At the time of the Foundation launch, the Wetaskiwin General Hospital was a fully accredited hospital system consisting of a 135 bed active treatment general hospital, a 50 bed auxiliary hospital, and a 50 bed nursing home. The hospital employed approximately 400 staff, and served close to 40,000 residents of the City and County of Wetaskiwin as well as

the adjacent First Nations Reservation. At that same time, the Hospital Board was in the final stages of planning for the new 180,000 square foot, 215 bed hospital with a capital cost of \$32 million.

The years 1986-1999 mark the founding era of the Wetaskiwin Hospital Foundation, where it began to make its mark within the local health community. The following pages outline several projects they undertook, as well as major administration changes that helped shape the program into what it is today.

#### 1986-88:

During the first 3 years the Foundation went through a period of learning and growth. The Foundation Board members wished to change the name of the Foundation to the "Rainbow Foundation". Legal advice was to give the Foundation a name that represented the area and what the foundation would do. So they kept the name as The Wetaskiwin Hospital Foundation. This was to represent the area and the need for health care in our community.



# TIMELINE

## 1986-1999

### 1985

**August 2:** Wetaskiwin Hospital Board passed resolution to form a Hospital Foundation

### 1986

**March 27:** Hospital Board appointed Dorothy French, Frank Dyck, and Clayton Monaghan to the Foundation Board

**April 7:** By-law approval received from Department of Hospitals

**May:** Wetaskiwin Hospital Foundation received its charitable designation

- 5 Founding Members: Dorothy French, Frank Dyck, Clayton Monaghan, Reno Gauthier & Hank Colborne
- Executive Director: Jack Ensign

**June 12:** Reno Gauthier nominated as Chairman, and Dorothy French nominated as Vice-Chairperson

**October 2:** WHF registration as a Charity

**December:** Foundation incorporated

**December 6:** Wetaskiwin Hospital Foundation Launch Ceremony

- Alberta Ministers officiating at ceremony: Honorable Don Sparrow (Wetaskiwin area MLA), Honorable Jim Dinning (Alberta Community & Occupational Health).
- \$139,592.24 bequest from Leonard Brzezinski became initial investment in the new Wetaskiwin Hospital Foundation

### 1987

**April:** Give to Life Mail Campaign Began

### 1988

- Participation in the National hospital fundraising campaign "Give to Life" was undertaken

**April 20:** Media debut on CFRN TV



Wetaskiwin  
Hospital  
Foundation  
Launch  
Ceremony with  
ED Jack Ensign,  
December 6,  
1986

## 1989

- First WHF Give to Life Campaign: Pulse Oximeters

**March 28:** Wetaskiwin Hospital Sod Turning

- Site of future hospital and nursing home

**July 3:** On Par Health Classic Golf Tournament

**November 14:** the Heartbeat (Wetaskiwin Hospital District Publication) Update on hospital construction: remains on track and on time.

- Scheduled to be completed November 1990
- \$33.5 million hospital complex

- 18,000 square metre complex, 4 levels, will have 130 active care beds, 80 nursing home beds
- Currently, 152 workers on the site
- The hospital will stand as a landmark in the community

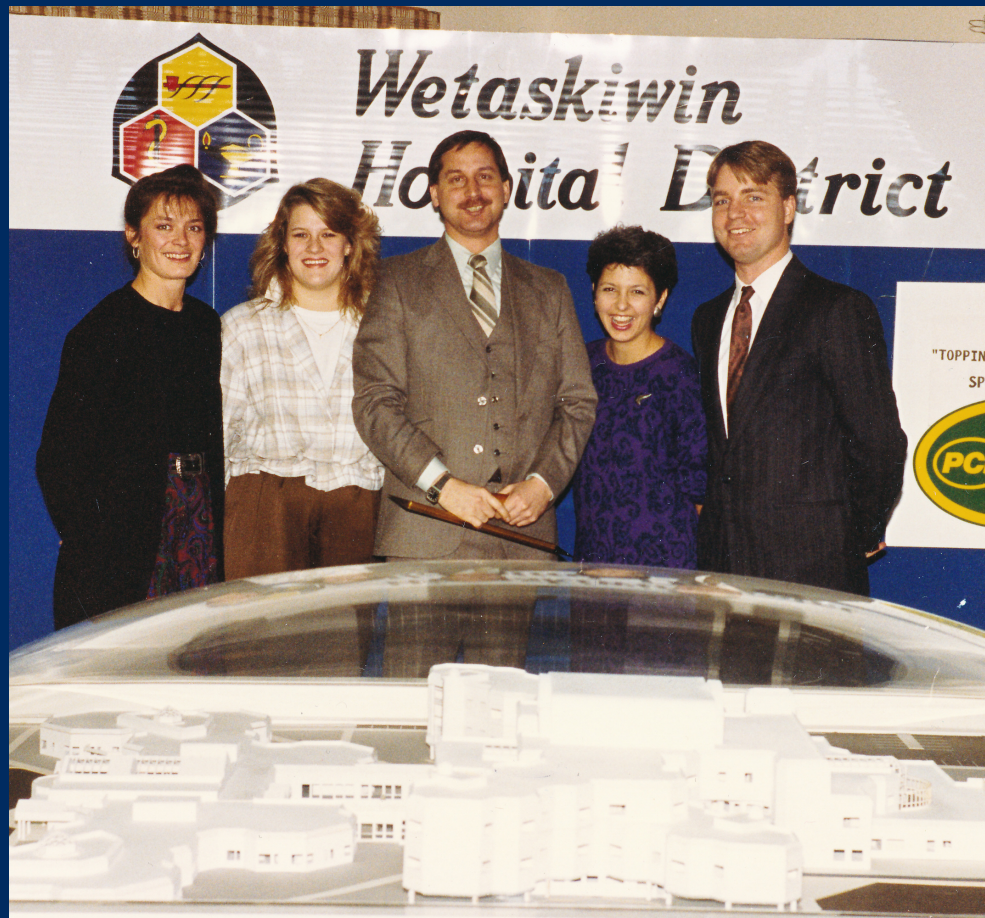
## 1990

- WHF took on the administration of E.A.R.S.
  - Emergency Alert Response System (EARS) was established in 1986 to provide a support system for the elderly and disabled residents of the City and County of Wetaskiwin
  - The program operated as an outreach program for the WHF

"The Wetaskiwin Hospital Foundation provides public relations support and supplementary funding to the Wetaskiwin Hospital District for the direct benefit of the Districts patients/clients. Funding is achieved through appeals to the public."

1988 Mission Statement

New Hospital Model (with Jack Ensign), 1990







WHF Launch Handivan, 1986 (left); New Handivan, 1990s

## 1990

**May 8:** the Heartbeat (publication of the Wetaskiwin Hospital District)

Updates:

- New hospital construction is coming along, should be ready to use by spring 1991
- Jack Ensign, ED of Wetaskiwin Hospital Foundation says that landscaping for the new hospital will depend upon donations from community residents
- Department of health doesn't give money for parking or landscaping, so looking for donations, \$200,000 total
- Approximately 25 acres to be developed
- Plans for: trees, shrubs, hydroseeding, 2 gazebos, & pathways
- Sprinkler system and children's playground will be extra cost

**December 11:** the Heartbeat

Publication Updates:

- Donations needed for a new Handivan
- Area farmer Grant Thompson donated 65-70 trees from his land for the new hospital landscaping, to act as a windbreak and barrier beside the highway

## 1991

- Ronald McDonald Children's Charity gave hospital \$20,000 grant for original pediatric unit

**May 9:** Parking Gates installed in Hospital (charge 25¢ per vehicle)

- WHF purchased gates for \$12,000

**June 14:** Official opening of the new Wetaskiwin District Hospital

- Honorable Nancy Betkowski, Minister of Health, officiated at the ribbon-cutting ceremony
- Tours of the new facility

## 1991

**June:** the Heartbeat Publication

Updates:

- Wetaskiwin Hospital Foundation helped to raise money for landscaping the hospital grounds
- Brzezinski donation made the hospital courtyard possible
- Lions and Lioness' Club donated money for the new handivan
- WHF will honour its donors in the new hospital with a plaque on the new donor wall (\$500 and up)

**July 16:** New Hospital opened, patients are moved this day

**November 5:** the Heartbeat Publication

Updates:

- 1991 Give to Life Campaign was a success
- Purchased mammography unit
- Need an additional \$30,000 to make unit totally functional

## 1992

- 1992 Give to Life Campaign: Mammography Unit Ultrasound Equipment

**June 22:** WHF total expenditures (equipment, public health education, patient comfort, beautification, community services): \$226,354

**Summer:** WHF Benches (5) placed around the City

**Autumn:**

- Donor Wall Completed. Named "The Legacy Circle" in 1993
- WHF logo created (Wetaskiwin Hospital Foundation)
- Raising money for new hospital chapel, \$40,000 of 70,000 still needed

**November 19:** Tours of the new Wetaskiwin Hospital. WHF Jack Ensign in charge of coordinating volunteers

**June 14, 1991: Official Opening of the new  
Wetaskiwin General Hospital**

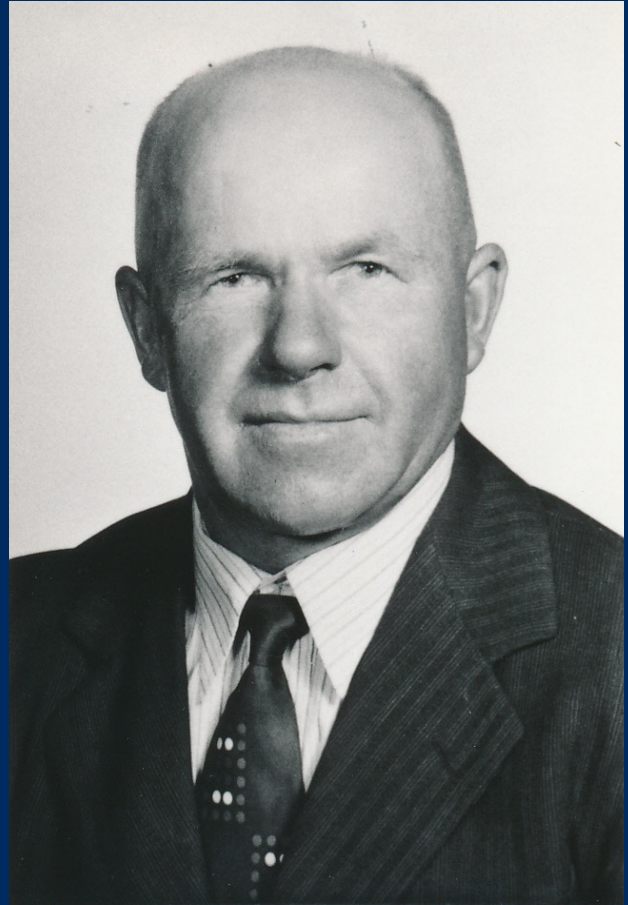
New Hospital, c.1991





## Donor Spotlight:

Leonard Brzezinski was born in Poland in 1912 and fought in North Africa with the Polish Signal Corps before immigrating to Canada in 1948. He came to Alberta in 1950 and purchased 160 acres of land for \$900 in the Westrose area. He spent considerable time in the Wetaskiwin Hospital facilities, and bequeathed his entire estate (\$160,000) to the hospital for enhancing the healthcare facilities and services in the community. The donation was used to build a courtyard in the new hospital facility. Brzezinski passed away June 15, 1979.



Wetaskiwin Hospital Long Term Care, n.d.





# FOUNDATION IDENTITY

## Logos & Name Changes



New (current) WHF Logo (above),  
adopted in 2007.



Original WHF Logo, adopted in 1992,  
with name change added in 1996.

1986:

Original Name: Wetaskiwin Hospital  
Foundation

1992:

New identity: Wetaskiwin Hospital  
Foundation logo created (same as  
Hospital Logo)

1995:

Wetaskiwin General Hospital  
changed their logo to the Crossroads  
Regional Health Authority logo. It was  
the same for almost 3 decades (3  
elements: peace pipe/three hills,  
medical symbol, and Florence  
Nightingale lamp). The new logo  
incorporates the same 3 elements  
(Wetaskiwin, meaning Hills of Peace  
in Cree, is represented by the peace  
pipe with 3 stylized hills on a yellow  
background, medical caduceus, and  
lamp of knowledge, a symbol used by  
the nursing profession) from the  
General Hospital's old logo created by  
Ron Maslin, which was a winning  
entry in a crest contest in 1966.

1996:

Foundation name change to  
Wetaskiwin Health Foundation

2007:

New Foundation identity and Logo  
adopted



"The Wetaskiwin Hospital Foundation is an important partner providing supplementary funding to enrich the health of our communities."

1999 Mission Statement



## 1993

- 1993 Give to Life Campaign:
  - Surgical Laser \$180,000
  - Sleep disorder unit at \$31,000

**January 26:** Hospital Chapel Sod Turning

**June 1:** Interfaith Chapel Dedicated

- The chapel cost \$69,770.00, paid with donations
- Dr. Leavert E. Johnson & Family supported the chapel with a generous donation

**November:** Laundry money transferred to WHF (approx \$70,000/year)

## 1994

**January 1:** Parking fees increased to 50¢/vehicle

**March:** The Wetaskiwin Hospital District & Wetaskiwin Hospital Foundation offer the Wetaskiwin Assisted Living project

**June:** Alberta Government established 17 Health Regions: Crossroads Health Authority

- Only 2 Foundations at that time  
Wetaskiwin Hospital Foundation & Drayton Valley Foundation

**June 3:** Inaugural On Par Health Classic Golf Tournament

- Profit of \$2359.86

## 1995

- 1995 Give to Life Campaign: Cardiac Equipment for the Special Care Unit

**March:** Crossroads Regional Health Authority (CRHA) officially took over

**April 17:** The Auxiliary Hospital was officially closed

- Patients moved to unit 33 in the new Hospital

**June 2:** On Par Health Classic Golf Tournament

- Goal to raise \$11,000/ profit of \$13,128.91





WHF On Par Health Classic Golf Tournament, 1996

## 1996

- 1995/96 Give to Life Campaign: Care Cottage and Assisted Living Unit
- CRHA dissolved the Hospital Board, WHF now report directly to them
- the Wetaskiwin General Hospital name was changed to "Wetaskiwin Health Centre"

**February 23:** Open House for Assisted Living housing units

- The Foundation worked on purchasing a unit that would be called "Lions Care Cottage"

**March 20:** Elks pay \$68,000 for Handivan

**June:** Name Change

- The Wetaskiwin Hospital Foundation was changed to "The Wetaskiwin Health Foundation"

**June 7:** On Par Health Classic Golf Tournament (3rd annual)

- Wetaskiwin Golf Club Texas Scramble

- Hole in one prize: \$100K mortgage from BMO
- profit of \$15,000

**July 22:** Wetaskiwin Times Advertiser

- New position for Jack Ensign
- From the Wetaskiwin Health Foundation's Director to new position as Regional Director for foundations
- Shift of focus from one hospital's needs to the needs of the region
- 3 foundations in Crossroads region: Wetaskiwin, Leduc, Drayton Valley

## 1997

**March 9:** Inaugural Give to Life Telethon

- 8 hour telethon broadcasted by Northern Cablevision (TV Channel 10), and KJR Radio (1440)
- Hosts for the event: CFRN's John Berry, local business woman Rhonda Moussa, Canadian Television icon Austin Willis



- Donations to go directly to healthcare programs & equipment.  
Raised \$50,000

**April:** Former E.A.R.S (Emergency Alert Response System) changed its name to "Care Line"

**June 3:** Completed purchase of Care Cottage

- Cost: \$89,848
- The Care Cottage unit would be used as a home for patients and their families as a place to stay while undergoing care; this would be free of charge to those who needed a place to stay.
- June 6: On Par Health Classic Golf Tournament
- At Wetaskiwin Golf Club

- Bank of Montreal major sponsor, \$100,000 mortgage prize
- Proceeds go towards purchase of a Pediatric Bronchoscope
- Profit: \$10,189.88

**October 22:** WHF granted CRHA \$10,000 for operation of handivan

## 1998

**May 6:** McHappy Day

- City of Wetaskiwin Mayor Gary Johnson issued a proclamation in support of McHappy Day
- \$1 from every Big Mac sold in Wetaskiwin will go towards supporting Ronald McDonald Charities and the Wetaskiwin Health Foundation (Pediatrics Unit)
- Raised \$4500

Give to Life Fundraising for Care Cottage (left), WHF Care Cottage (right), 1990s



## 1998

**June 1:** Parking lot revenue used to purchase Automatic Door

**June 5:** 5th Annual On Par Health Classic Golf Tournament

- Wetaskiwin Golf Club Texas Scramble
- Raised \$8600 for WHF

**June 10:** WHF to plan a campaign to show how parking revenue is spent (on equipment)

**September 1:** Parking at Hospital raised to \$1/vehicle

**November 24:** ATM cash machine installed in lobby of Hospital

**November 30:** Parking Lot fees purchased a tub scale (\$4500) for the long term care unit, and a medi-lift (\$4500), which helps patients get in and out of bed

## 1999

**April 1:** WHF operating revenue is from parking, need a plan to bring in more funds

**April 18:** Give to Life Health Telethon

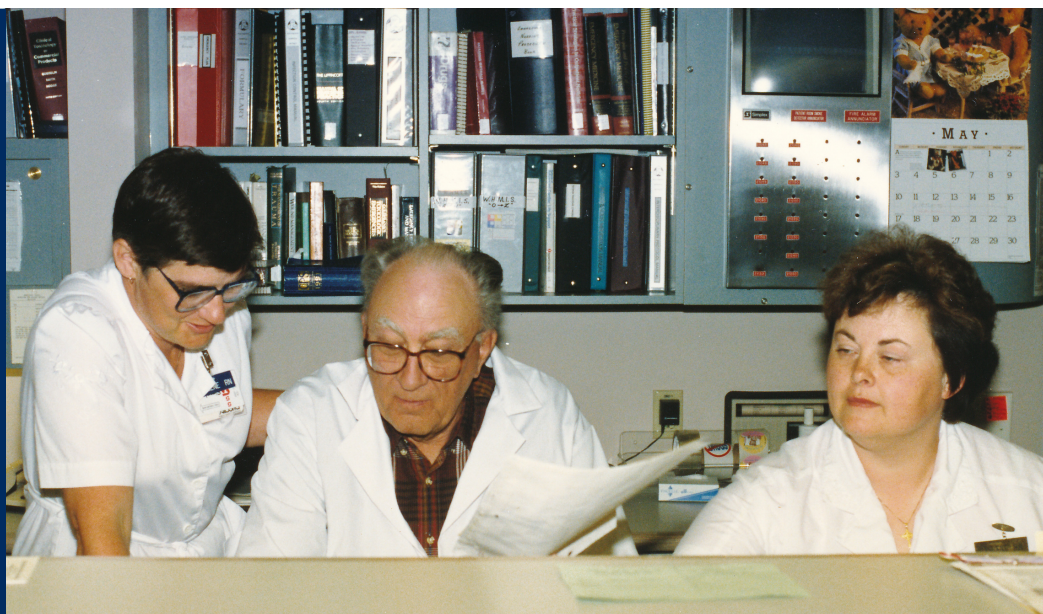
- goal to raise \$30,000 for health services & equipment
- Memorial Arts Centre
- Performers: Singer Dianne Donovan, Jazz Pianist Tommy Banks
- Broadcast on Northern Cablevision's channel 10
- Raised \$30,051
- Hosts: Carrie Doll & Joel Gotlieb from CFRN News
- Proceeds to purchase hospital equipment and services

**June 4:** On Par Health Classic Golf Tournament (6th Annual)

- Proceeds will be used to support Wetaskiwin's PARTY Program (Prevent Alcohol and Risk Related Traumas in Youth)
- Profit: \$12,000
- Sponsor: Investors Group

**July 8:** Patients Garden started

Dr. Leavert  
Johnson & staff  
working in  
Wetaskiwin  
Hospital, 1998





## Mary Morrison Resident Garden



Mary Morrison (in wheelchair); New Mary Morrison Resident Garden, 1999

### 1999

#### September 25: Dedication of Mary Morrison Resident Garden

- Mary Morrison: sold house in 1997 and moved into long term care, she attended the event
- Garden in the long-term Care facility
- Forster Nurseries created the space in 2 months
- Variety of trees and shrubs, with a concrete walkway, replica gas lanterns, benches, gazebo-like structures, including a large fountain in the centre
- Wetaskiwin Healthcare Auxiliary initiated this project
- Hospital's Ladies Auxiliary donated \$10,000 towards this project, as Mary Morrison helped to rejuvenate the auxiliary into an active visible presence in Wetaskiwin 20 years earlier
- WHF provided a large portion of the funding required to complete this project
- "This Garden will allow residents to regain a sense of freedom." -spokesperson for the Foundation



1986-1999

# DONORS

Donations over \$5,000

- Benevolent & Protective Order of the Elks #91
- Beryl M. Ballhorn
- Bruce Finkel
- Dopko Food Services Ltd.
- Dorothy Colborne
- Dr. Deliyannides
- Estate of Rose Marie Koenen
- Gordon Ballhorn
- Government of the Province of Alberta
- Grant Thompson
- Kiwanis Club of Wetaskiwin
- Leavert Johnson
- Leonard Brzezinski
- Lioness Club of Wetaskiwin
- McDonalds
- Peter Langelles
- Royal Canadian Legion Branch No. 86
- Royal Canadian Legion Branch No. 86 - Ladies Auxiliary
- Staff Association (Hospital, CHC and Mental Health)
- Wetaskiwin & District Ministerial Association
- Wetaskiwin Elks Lodge #91
- Wetaskiwin Healthcare Auxiliary
- Wetaskiwin Hospital & Care Centre
- Wetaskiwin Lions Club
- Wetaskiwin Loyal Order of the Moose #1559
- Wetaskiwin Senior Citizens Society
- Women of the Moose Wetaskiwin Chapter No. 559

New Donor Wall in Hospital (bottom left), 1994; Elks Donation (with Jack Ensign & Randy Plant), 1990s





# DONOR-FUNDED PURCHASES

(Not a Complete List)



## 1992

- 5 benches to put around the City
- Video cassette player
- Birth model
- Operating microscope
- Pictures for Long Term Care
- Computer system & equipment
- Christmas decorations
- Century tub
- Continuous passive motion machine

## 1993

- Infusion pump
- IV pump
- Eye Clinic funding
- 3 Pediatric beds
- Stained glass window for Chapel (Mrs. Gladys Abousaffy)
- 3 E.A.R.S units
- Nintendo games to Peds
- Pediatric ward improvements

## 1999

- MTX (Coagulation) Analyzer: measures how well a patient's blood clots
- Pulmonary Function Machine (\$40,000): determines lung capacity, and can help in the early detection of lung problems

## OTHER

- Christmas decorations
- Shampoo Chair (Good Shepherd)
- Family Support Group
- 2 Microwaves
- 2 large TV's
- Therapy table
- Portable Mic
- medi-lift

- Power Wheelchair
- Therapeutic Laser
- Mill Work
- Education videos
- Pediatric toys
- Piano
- Awnings
- 3 Pulse Oximeters
- tub scale (long term care unit)

1986-1999

# BOARD MEMBERS

## All Members:

- Dale Kelley: Chair, Vice-Chair (1989-1996)
- Abe Friesen: Chair (1990-1993)
- Warna Moore: Vice Chair (1990-1992)
- Peter Langelles (1990-1994)
- Garry Cockbain (1992-1998)
- Randy Plant: Chair (1994-1999)
- Leonard Olson: Vice Chair, Chair (1994-2006)

## Founding Members:

- Frank Dyck (1986-1994)
- Dorothy French: Vice Chair (1986-1990)
- Clayton Monaghan (1986-1993)
- Reno Gauthier: Chair to 1989 (1986-1996)
- Hank Colborne (1986-1989)

- Dr. Richard Horner (1996-2000)
- Gwen LaForty-Willis: Vice Chair (1996-1998)
- Norm Hallgren (1996)
- Dr. M. Haidar (1996-1999)
- Carol Blair: Vice Chair, Chair, Treasurer (1996-2007)
- Glenda Coutney (1997-2002)
- Sherri Nerbas (Scorah) (1997-1999)
- Barb Linaker (1998-2000)

# STAFF

- Jack Ensign: Executive Director (1986-1999)
- Holly Dudley: Recording Secretary (1993-1998)
- Terry Clayton: Student (Summer 2003)
- Priscilla Stephan: Recording Secretary (1998-1999)
- Dawn Miller: Accounting (1998-2000)
- Judith Toth: Careline Staff (EARS)

WHF Board at Hospital Ceremony,  
1990s





# MEMORIES

1986-1999



Randy Plant (WHF  
Chair & Interim  
Director), 1998

Judy Toth  
demonstrating  
Careline  
Service (right),  
1990s



Northtown Village; Hospital Courtyard (below), 1990s



Wetaskiwin Hospital (below), 1996








WHF On Par Health Classic Golf Tournament, c1994

Aerial View of New Hospital (below), c1991







# On Par Health Classic

Would Like to GIVE A BIG **THANK YOU**

The Wetaskiwin Hospital Foundation would like to thank the following Sponsors for making the 1st Annual **On Par Health Classic Golf Tournament** a huge success on June 3, 1994.



- 1440 KJR Radio
- Adams Pontiac Buick GMC
- Allied Distributors
- Apple Auto Glass
- AR-AL Golf Enterprises Ltd.
- Asco Electric
- Austin Willis
- Bank of Montreal
- Bill Hunchak
- Bourbon St.
- Brentridge Mercury
- Brick Warehouse
- Calhoo Meats Ltd.
- Caltec Scientific
- Canadian Tire
- Century 21 - D. Kelley Realty
- Chapman Electric
- Club 147
- Compaq Canada
- Computer & Telephone Cabling
- Continental Earthmovers
- Creative Interiors
- D. A. Dudley Agencies
- Duane Raymond
- Ed Lal
- Ensign Recognition Products
- IMED
- In Touch Massage Therapy
- John Maude
- Labatts
- Landis & Gyr
- Ledue Truss
- Managed Investments
- Mathew Co. Ltd.
- McDonald's Restaurant
- Medgas
- Northwestern Utilities
- Parkview Sales
- Paul & Bev Sweet
- Peace Hills Building Supply
- Petro Canada
- Pioneer Chrysler Jeep
- Plasti-Kote
- Prefontaine Agencies
- Realty World
- Reno's Bumper to Bumper
- Royal Bank
- Russ Mann
- Scotty's Plumbing
- SHL Computer Innovations
- Stant Corp.
- Supreme International
- The Building Centre
- Treasury Branch
- Uniglobe Travel
- Wetaskiwin Co-op
- Wetaskiwin Garden Market IGA
- Wetaskiwin Golf Club
- Wetaskiwin Golf Course
- Wetaskiwin Greyhound
- Wetaskiwin Home Hardware
- Wetaskiwin Honda
- Wetaskiwin Times Advertiser
- Yamaha Canada
- Zetsen Homes Ltd.

A Special thanks to all the people who entered or volunteered their time towards this worthwhile fund raising project.

**We look forward to seeing you next year!**

WHF On Par Health Classic Ad, Wetaskiwin Times, 1994





2000-2008

## David Thompson Health Trust Era

---

WHF Executive Director  
Barry McDonald, 2001

### THE WETASKIWIN

Health Foundation continued to grow and by the year 2000 it was reconstituted into a more conventional fundraising foundation. Part of this makeover was an initial endowment of \$1.2 million, which became known as the Health Futures Fund (HFF), and was used to establish a sustainable financial platform to pay salaries and meet office costs. The year 2000 was one of transition for the Wetaskiwin Health Foundation. The Board developed an agreement and new business plan with the Crossroads Regional Health Authority (CRHA), and as a result, hired a new

Executive Director, Barry McDonald, in June of that year.

Changes continued when the David Thompson Health Region (DTHR) took over from the CRHA in 2002. In 2004, the WHF began working more closely with the DTHR management team and took on a series of larger capital projects. By the end of the 2004 fiscal year, the WHF had contributed approximately \$2 million to the Wetaskiwin Hospital and ancillary groups since its inception. In the succeeding years, the WHF continued to work on larger capital projects.

# TIMELINE

## 2000 - 2008

### 2000

- No executive director, Board Chair Randy Plant became interim director until July 2000

**March 13:** WHF helps Hospital receive new piece of equipment

- Thermal Choice Uterine Balloon System (help women who suffer from heavy menstrual bleeding, but who aren't candidates for a hysterectomy), cost \$7500

**March 26:** Give to Life Telethon

- Carrie Doll and Ian Leonard emceed this event
- Raised \$43,459

**April 10:** WHF helps Hospital receive new piece of equipment

- WHF recently purchased a 30 degree laparoscope to help surgeon's view the inside of a patient's abdomen without the need for a large incision
- \$3000 instrument

**May:** WHF signed agreement with CRHA to ensure an effective and efficient health foundation for the residents of the City of Wetaskiwin and surrounding area

"The Wetaskiwin Health Foundation is an important partner providing supplementary funding to enrich the health of our communities"

-WHF Mission, 2000

"Health...everybody's responsibility"

-WHF Vision, 2000

"The (Wetaskiwin Health) Foundation's role is to raise funds which is to enhance the level of care that our patients receive, enhanced care through the purchase of advanced medical equipment and by funding programs that augment patient care. The Foundation's efforts help retain the high level of patient care that our community has come to expect."

-WHF Official Correspondence, 2000





Health Classic  
Golf  
Tournament  
(top), 2001;  
WHF Careline  
Ad -  
Wetaskiwin  
Times, June 16,  
1997; WHF's ED  
Barry  
McDonald  
accepting  
cheque  
(bottom),  
December  
2000.



## 2000

### June 2: Health Classic 2000 Charity Golf Tournament

- Silent auction & dinner
- Raised \$13,223 (WHF 2001 Annual Report)
- Major sponsors: Magnum Mechanical, Telus, Wetaskiwin Times Advertiser
- 18 holes, banquet, awards, silent auction

### July 26: WHF Press Conference

- Announcement of new Executive Director Barry McDonald (offered the position in June)
- Taking over from interim director Randy Plant
- Officially started July 20
- Was previously the Executive Director of the Alberta 4H Centre

### September 1: Discontinued Operations of the Care Line Service

- Effective Sept.1 CRHA assumed the operations of the Care Line service
- Capital assets and inventory of \$97,030 were transferred to CRHA as part of the agreement

## 2001

- WHF started hiring summer students (until 2005)
  - Helped with large events and office administrative work
- WHF started the Living Foundation's Breakfast for learning program
  - Morning snack program at Centennial School

## 2001

- WHF teams up with ITS Travel & Cruise (formerly Viscount Travel)
  - All flights, holiday packages and cruises booked & 15% commission sales to be donated to support WHF

**June 7:** 1st Annual Wine & Cheese Gala and Charity Auction

- Raised \$7800
- 180 people attended
- 100 donated items for live, silent and raffle auctions

**June 8:** Health Classic 2001 Golf Tournament (new staff this year)

- Wetaskiwin Golf & Country Club
- \$500K in prizes
- 120 golfers
- Proceeds go towards the Surgical Cataract Program
- \$32,000 generated from both events will be used to help purchase the phacoemulsifier

**October 30:** WHF Board decides to sell Care Cottage

## 2002

- change of Crossroads Health Authority to David Thompson Health Region (DTHR) in 2002-2003
- staff payroll deduction program started at hospital, where they could opt in for a monthly donation to the WHF

**June 6:** Health Foundation Wine & Cheese Gala 2002

- Memorial Arts Centre
- Live and silent auction
- “Entertainment with a purpose”

**June 7:** Health Classic 2002 Golf Tournament

- More than \$1,370,000 in prizes
- Proceeds will be used to purchase new clinical equipment

**November 14:** Battle of the Badges

- Millet
- WHF beneficiary of the event
- Proceeds will be used to sponsor youth with asthma and to purchase respiratory related clinical equipment

WHF Health  
Classic  
Tournament at  
the Wetaskiwin  
Golf Club, June 8,  
2001







HEALTH CLASSIC 2001  
GOLF TOURNAMENT

WHF Barry McDonald accepts Cheque  
(below), 2001







Jessica Maude & Werna Moore (left), 2003; Piper Campbell Wallace leads golfers to shoot-outs (right), 2003

## 2003

- Hospital Name Change to "Wetaskiwin Hospital and Care Centre"
- Capital Campaign 2003:
  - Raise \$300,000
  - Purchase bronchoscope and laparoscopic camera system

**March 16:** Give to Life 2003 Campaign Reception and Donor Wall Unveiling

- 2003 Goal: \$100,000
- Since 1985: approx. 8800 private donors and 945 corporate donors, sponsors, and service clubs have enabled the WHF to complete its mission

**June 20:** Health Classic 2003 Golf Tournament

- Raised \$23,000
- Wetaskiwin Golf Course
- Proceeds towards Give to Life 2003

**September 29-October 5:** Tim Horton's Smile Cookie Campaign

- Receive supplies for 2450 cookies
- Proceeds to WHF for purchase of pediatric medical equipment

**October 15:** Donor Recognition Night

- Over \$64K raised in 7 months
- More than 8800 donors in the Give-to-Life campaign

**November 20-21:** WHF Craft Fair

- Drill Hall, Christmas Shopping

**December 4:** Spirits of Christmas Gala

- Memorial Arts Centre
- Sponsor: Budget Beer and Spirits
- Wine tasting
- Live and silent auctions
- Goal to raise \$4000 to purchase 4 pulse oximeters
- Live entertainment, Christmas shopping, door prizes, hor d'oeuvres



## 2004

- 2004/2005 Give to Life Fundraising Project: Diagnostic Imaging/CT Scanner (\$250,000)

**March 12:** Grand Opening of new Dialysis Unit

- Completed October 2003

**May 27-28:** Community Outdoor Farmers Market & Garage Sale

- Safeway & WHF
- Proceeds go towards CT Scanner
- Part of Safeway's "Because We Care" program, they chose WHF for the 2004/05 year for a community partnership

**June 11:** WHF Annual Health Classic Golf Tournament

- Proceeds go towards CT Scanner
- \$1 million grand prize
- 99 players

**September 12:** Chairman's Reception

- Kick off to the new Capital Campaign (CT Scanner)

**September 20-26:** Tim Horton's Smile Cookie Campaign

- raised \$1734

**November:** Construction started for housing of proposed CT Scanner

**November 26-28:** 11th annual Gingerbread & Glitter

- 2 days of events: displays, family dance, etc
- Some of the proceeds to go towards the new CT scanner

**December 2:** 4th Annual Spirits of Christmas Gala

- Reynolds Alberta Museum
- Over \$11K raised towards purchase of CT Scanner
- Over 300 guests
- Hor d'oeuvres, silent auction, art show, live entertainment, Christmas Shopping

## 2005

- 2005/2006 Capital Project: Complete Diagnostic Imaging/CT Scanner \$250,000
- Staff 50/50 Draw began at the hospital

**February 14:** Give To Life Fundraiser

- Co-op Country Junction - CFCW radio live broadcast on location
- 5% of all sales go towards the CT scanner



"Because We Care" WHF Fundraising Event at Safeway (both), 2005

## 2005

**March 19:** Kinsmen-Kinette Rockfest Fundraiser

- Drill hall, 350 attendees
- Bands: Jade, Naughty Divas, Screwtape Lewis
- Raised \$5000 towards CT Scanner

**May 27-28:** Safeway "Because We Care" Event:

- Community Outdoor Flea Market/Tail Gate Garage Sale
- Safeway parking lot
- Proceeds from space rental towards CT Scanner

**June 9:** WHF Health Classic 2005 Golf Tournament

- Wetaskiwin Golf Club
- Raised \$10,500
- \$1,500,000 in prizes
- Proceeds towards CT Scanner

**September 9:** Grand Opening CT Scanner Facility at the Wetaskiwin Hospital

- Wetaskiwin Hospital and Care Centre Auditorium
- Ribbon cutting, media photos of scanner, tours & refreshments

**December 1:** Spirits of Christmas Gala

- Reynolds Alberta Museum
- More than \$12,000 raised
- Major sponsor: Budget Beer & Spirits

## 2006

- Have-A-Heart Campaign 2006: WHF committed to raising \$233K towards the purchase of new state-of-the-art cardiac care equipment

**March:** Executive Director Barry McDonald resigned & staff member Colleen Zimmerman given the position of Wetaskiwin Health Foundation Development Officer

**June 8:** 12th Annual Health Classic Golf Tournament

- Wetaskiwin Golf Course

**October 6:** Donor Appreciation Tea & Have-A-Heart Kick Off

- Hospital Auditorium

**November:** 13th Annual Gingerbread & Glitter

## 2007

**February 22:** Charity Hockey Event

- Raised \$3000

**April 26:** Grand Opening of Palliative Care Suite at the Wetaskiwin Hospital & Care Centre

- Project of WHF & Cec Colwell (Board Member)
- Cec Colwell advocated for palliative care fundraising (his wife died in the Wetaskiwin hospital)
- The plaque for the Palliative Suite reads as "The Funding For This Family Care Suite was Provided by the Generous Support of the Community for a Campaign Initiated in Memory of Doris Colwell April 2007"
- Required approx. \$85,000 in funding to construct

**May 9:** McHappy Day Fundraiser

- Raised \$5000 for WHF

**September:** Tim Horton's Smile Cookie Campaign, raised \$2800

**November:** 14th Annual Gingerbread & Glitter 2007



## Dr. Henri M. Toupin Diagnostic Imaging Centre

New CT  
Scanner at  
the  
Wetaskiwin  
Hospital,  
2005



### SEPTEMBER 9, 2005: GRAND OPENING

- WHF Board & Staff ran the most successful Give to Life campaign ever: raising more than \$500,000 toward the cost of the new scanner
- Naming dedication: in recognition of their generous gift (H.M. Toupin Medical Foundation donated \$300,000 towards the CT scanner), they named the Diagnostic Imaging Centre: **Dr. Henri M. Toupin Diagnostic Imaging Centre**

### CT Scanner Project Facts:

- What is a Computed Tomography (CT) Scanner? Computed Tomography (CT) is a diagnostic imaging technique in which a specialized x-ray machine and computer are used to create a detailed picture of the body's tissues and structures
- What is it used for? To detect abnormalities in organs and soft tissues, to detect tumors, blood clots, cancers, effects of trauma, etc.
- How much did it cost to install the CT Scanner? The project cost approx. \$2.2 million (\$950,000 for renos, \$1.2 million for scanner). Alberta Infrastructure provided the funds for the renovation, \$500,000 was raised in community donations to help cover the cost of the scanner through the WHFs Give to Life Campaign
- Construction started November 2004 and completed May 2005. Scanner was installed on April 15 and performed its first scan on May 16, 2005.
- How much does it cost to maintain the scanner? Costs approximately \$800,000/year to operate
- Approx. 10-15 scans are performed in Wetaskiwin each day

## 2008

- 2008/2009 Capital Projects:
  - Phase 1 Surgical Services Expansion \$401,000
  - Pediatric Children's Play Area Renovation \$30,000
- David Thompson Health Trust:
  - they took over the WHF Staff for a trial of 1 year
  - Gail Urquhart from DTHT provided Executive Director guidance; she attended meetings and did reports.

March 28: Wetaskiwin's Got Talent

- Local churches fundraising for healthcare at Memorial Centre

May 17: Movie Gallery & VHQ Fundraiser

June 23: Health Trust created by DTHR for area

- DTHR appointed 11 volunteers from across the region to sit on the inaugural David Thompson Health Trust's Board
- The Health Trust's Board will help raise funds to enhance health care programs and services across DTHR
- Local Wetaskiwin resident Rob Park is on the board, who is currently co-chair on the WHF Board, and has been a member since 2003
- The health trust board will help in fundraising support and leadership for foundations such as WHF

## Palliative Care Suite at Wetaskiwin Hospital & Care Centre, 2007



Cec Colwell in wheelchair (top); Cheque donation for Palliative Care Project (Colleen Zimmerman 2nd from left, and Cec Colwell on right), 2007



# 2000-2007 DONORS

Donations over \$5,000

- Baker Funeral Chapel
- Beattie Family Memorial Donations
- Benevolent & Protective Order of the Elks #91
- Beryl Pritchard Estate
- Canada Safeway
- County of Wetaskiwin No. 10
- David Thompson Health Foundation
- Denabet Holdings Ltd.
- Erven Heinz
- Estate of Anna Marguerite Elise Dahlberg
- Estate Miasniko
- Government of the Province of Alberta
- Harold Simonson
- Henri M. Toupin Medical Foundation
- Home Hardware Stores Ltd
- J. Letourneau Insurance Services
- John A. Maude
- Kinsmen Club of Wetaskiwin
- Lions Club of Pigeon Lake
- Ma-Me-O Senior Sunsetters Association
- Magnum Mechanical Systems Ltd.
- Maxine Rodgers
- Millet Legion #229
- Normanna Lodge #595 Sons of Norway
- Peace Hills General Insurance Company
- Royal Bank Financial Group
- Royal Canadian Legion Branch No. 86
- Royal Canadian Legion Branch No. 86 - Ladies Auxiliary
- Sound Relaxation
- Smile Cookie Campaign
- STARS
- The Building Centre Inc.
- The Co-operators
- The Friends of the Community of Wetaskiwin Society
- Wetaskiwin Full Gospel Fellowship
- Wetaskiwin Healthcare Auxiliary
- Wetaskiwin Lions Club
- Wetaskiwin Loyal Order of the Moose #1559
- Wetaskiwin Rotary Club
- Wetaskiwin Times
- Women of the Moose Wetaskiwin Chapter No. 559

Shoppers Drug Mart Donation to  
WHF, 2006



## DONOR-FUNDED PURCHASES

(Not a Complete List)

### 2000

- ACLS trainer
- Fatal vision goggles & line detector
- Tub chair
- Volumetric infusion pump
- Infant swings
- Toys

### 2001

- Education items
- ER items: hand-held pulse oximeter
- Home Care & OT items
- Long Term Care items
- Public Health & Respiratory items

## PROJECTS

2001/2002: Surgical Cataract Program

2003: Bronchoscope and  
Laparoscopic Camera System  
\$300,000 purchase

2004: Phase 1 Diagnostic Imaging/CT  
Scanner \$250,000

2005: Phase 2 Diagnostic Imaging/CT  
Scanner \$250,000

2006: Phase 1 Cardiac Equipment  
Refit \$240,000

2007:

- Palliative Care Room & Suites:  
\$125,000
- Phase 2 Cardiac Equipment Refit  
\$230,000

### 2002

- Phacoemulsifier
- Computer for Long Term Care

### 2003

- GTL equipment
- Laparoscopic camera system
- Bronchoscope

### 2004

- Swing
- Landscape rock and plants (Mary Morrison Garden)
- 5 new Digital Pulse Oximeters

### 2005

- CT Scanner (computerized tomography)

### 2006

- Telemetry unit
- Monitors for SCU

### 2007

- IV pumps
- Art work
- Fetal Heart Monitors
- Pediatric crash cart

Surgical Cataract (deteriorated  
cloudy lenses) Program:

- Phacoemulsifier (cataract remover) \$60,000 purchase
- 2001: Needed to replace old one which is a decade old
- Phacoemulsifier: gently dissolves cataracts using high frequency sound waves
- Phacoemulsification is when an ultrasound laser breaks the cataract apart through a tiny incision in the eye, then a new lens is inserted. Entire process takes 20-25 mins



2000-2007

# BOARD MEMBERS

- Leonard Olson: Vice Chair, Chair (1994-2006)
- Dr. Richard Horner (1996-2000)
- Carol Blair: Vice Chair, Chair, Treasurer (1996-2007)
- Glenda Coutney (1997-2002)
- Barb Linaker (1998-2000)
- Bill Ballhorn: Treasurer, Vice Chair (2001-2008)
- Judith Sydenham (1999-2002)
- Warna Moore (2001-2005)
- Sherri Polei: Treasurer (2001-2004)
- Rob Zimmerman (2001)
- Irene Andres (2001-2002)
- Dean Billingsley (2002-2005)
- Allen Deckert (2002-2008)
- Sean McKibbin (2002-2004)
- Diane Denham (2002-2004)
- Cynthia Feldberg (2002-2006)
- Rob Park: Vice Chair, Chair (2004-2011)
- Bryan Wyley (2004)
- Gordon Danylchuk (2005)
- Morley Blanch: Vice Chair, Treasurer (2005-2008)
- Patti Ganske (2006-2010)
- Cec Colwell (2006-2008)
- Lillian Dykes (2007-2008)
- Dana Ryffel (2007-2011)
- Peter Murray (2002)

# STAFF

- Barry McDonald: Executive Director (July 2000-Jan.2006)
- Beth (Glaser) Turnbull: Recording Secretary (1999-2000)
- Lori North: Administrative (2000-?)
- Joan Paul: Accounting (2001-?)
- Ryan Deacon Jones: Student Practicum (2001)
- John Nichols: Student (2002)
- Judi Adilman: Foundation Assistant (2001-2002)
- Tonya Jacobi: Administrative Assistant (2003-?)
- Jessica Maude: Student (Summer 2003)
- Beverly Schneider: Accounting (2004-2006)
- Bobbi Dymond: Foundation Assistant (2004-?)
- Colleen Zimmerman: PT Administrative (2004-2005)
- Mandy Angeltvedt: Summer Student (2005)
- Stacey Coughlan: Administrative (2005-2006)
- Marilyn Plant: Administrative (2006)
- Colleen Zimmerman: Development Officer (2006-2008)
- Linda Reid: Administrative & Accounting (2007-2020)



# MEMORIES

## 2000-2007



Home Hardware Donation (above), 2007; Christmas Donations to the WHF (below), 2000



Piper at On Par Health Classic Golf Tournament, 2001



Wetaskiwin Hospital & Care Centre, 2000s





2008-2015

# Campaign Era

---

WHF Executive Director  
Lillian Dykes, 2013

**BY 2008**, the Wetaskiwin Health Foundation (WHF) was part of another transition. Since 2004, the Foundation had been working with both the David Thompson Health Region (DTHR) and the Hospital Site Leader in order to ensure that all capital projects furthered the DTHR service plan of moving the Wetaskiwin Hospital from a “community” hospital into a “hub” hospital. But in 2008, Canada’s first and largest province-wide, fully-integrated health system, the Alberta Health Services (AHS) was announced, and the services became fully operational in April 2009. Lillian Dykes joined the WHF team

first as a board member in 2008, then stepped up into the Development Officer later in the same year, and finally became the Executive Director in 2010. Under her direction, the Foundation began larger scale annual fundraising campaigns on a regular basis. By the time of Lillian’s retirement in 2015, the WHF was able to help improve the hospital by reinvesting donor funds of approximately \$3 million dollars. Major projects focused on Long Term Care and Surgical Services, but minor projects were also completed, including several smaller equipment purchases for the hospital.

# TIMELINE

## 2008-2015

### 2008

- 2008/2009 Capital Projects:
  - Phase 1 Surgical Services Expansion \$401,000
  - Pediatric Children's Play Area Renovation \$30,000

**September 22-28:** Tim Horton's Smile Cookie Campaign

**October:** Repair & Upgrades to Hospital Parking Lot Completed

- Pavement, new coin boxes, arms and concrete to secure equipment
- During this time the parking cost was raised to \$2.00

**October 18:** Big Red Barn Family Dance (1st Annual)

- Inaugural barn dance
- Wagon rides, kids activities, BBQ beef & beans, Moon Dogs music, silent & live auction
- All proceeds to Surgical Campaign
- Raised \$17,000
- 350 in attendance
- Dr. William Hendricks (right) had just built a new barn and approached the foundation with the idea of holding "a real barn dance" in the barn as a fundraiser. The idea was so good it outgrew the barn and later moved to the Drill Hall in Wetaskiwin.



First Annual Barn Dance, 2008







Colleen Zimmerman (WHF Development Officer) at 1st Annual Barn Dance, 2008



Opening of Pediatric Playground in Hospital, 2009



## 2009

- 2009/2010 Fundraising Program (total Campaign: \$385,000):
  - \$220,000 Obstetric & Gynecology Equipment
  - \$110,000 Clinical Ultrasound Machine
  - \$55,000 FAST Ultrasound Machine

### March 9: Peds Playroom Opening

- New playroom in Wetaskiwin Hospital's Pediatric Unit
- Thanks to a \$30,000 donation from Ronald McDonald Children's Charity
- Makeover with new kid-friendly furniture, paint, murals, and toy sanitizer machine

### September 23: Tim Horton's Smile Cookie Campaign

- Proceeds donated to WHF for eye surgery enhancement services

### November 13: 2nd Annual Barn Dance & Pie Social

- Drill Hall
- Local country singer Tracy Millar
- Fundraised & met goal of \$25,000 (raised \$27,000)
- Live Auction: Deluxe Caribbean Cruise, golf package
- 250 in attendance
- Proceeds to purchase a Focused Assessment with Sonography for Trauma (FAST) Ultrasound machine for the Emergency Department at the Wetaskiwin Hospital & Care Centre (cost \$55,000)



New WHF Office (left), 2010; Tim Horton's Staff helping with the WHF Smile Cookie Campaign (right), 2012

## 2010

- Foundation office moved to the main floor of the hospital just left of the main doors

**March:** Lillian Dykes hired as Executive Director

**June 3:** WHF Open House and Hospital Tour

- To celebrate fundraising success
- The hospital has so far benefited from over \$400,000 worth of hospital and surgical equipment
- All this money raised through donations and fundraising

**September 20-26:** Tim Horton's Smile Cookie Campaign

- \$4608 raised
- Proceeds from the \$1 smile cookies
- Smile campaign since 2004

**October 16:** 3rd Annual Barn Dance & Pie Social

- Fundraising for: Bariatric Bed for the Wetaskiwin Hospital & Care Centre
- Drill Hall
- Entertainment: Tracy Millar, Allan Valberg
- Pie baking contest, live & silent auction
- Approx \$18,000 raised towards a \$35,000 Bariatric Bed
- 160 in attendance

**December:**

- Surgical Campaign completed (raised \$400,000)
- Christmas appeal (raised over \$26,000) for Senior Wellness



## 2011

- New Campaign (2011-2012): Senior Health & Wellness
- WHF started using social media

**July:** Canada Day Pancake breakfast at Sunrise Village (WHF Board members)

**July 14:** Birthday Party Launch

- Wetaskiwin Hospital & Care Centre (20 year anniversary) opened June 14, 1991
- Wetaskiwin Health Foundation celebrates 25 years
- Hot dog lunch in courtyard of hospital complex

**August:** Wetaskiwin Parade

- WHF entered a float and won 1st place
- Float looked like a birthday cake as it was celebrating 25th Birthday

**September 19-25:** Tim Horton's Smile Cookie Campaign

- Raised \$5676

**October 15:** 4th Annual Barn Dance & Pie Social (WHF 25th Anniversary event)

- Drill Hall - 250 guests
- Entertainment: Hey Romeo live band, Live & Silent Auction, Wine Tasting Bar
- Dr. Hendricks auctioned off his entire full western attire, including cowboy boots and hat, leaving him in one-piece underwear by the end
- Proceeds to Senior's Health and Wellness (raised approx. \$20,000)
- in attendance: Mayor Bill Elliot, MLA, Minister of Justice, and Attorney General Verlyn Olson

## Wetaskiwin Health Foundation celebrated 25 Years in 2011

WHF 25th Birthday Celebration Float in Wetaskiwin Parade; Cake at Birthday Party Launch, 2011



## 2012

- Fundraising Campaign 2012/13: Surgical Program Enhancement (\$231,000)
- WHF started bringing in vendors to the hospital lobby. They gave a donation to the foundation in order to do so

**June 28:** WHF Canada Day Pancake breakfast at Sunrise Village

**September 19-23:** Tim Horton's Smile Cookie Campaign

- Raised \$8340 for the purchase of new cribs for the pediatrics ward

**October 20:** 5th Annual WHF Barn Dance & Pie Social

- Drill Hall - 250 in attendance
- Entertainment: Country singer Cody Prevost
- Proceeds for the Surgical Enhancement Program (new initiative with goal of raising \$120,000 in a year)
- Raised between \$33-36K

## 2013

**April 10:** Purchase of new cribs for Pediatric Unit

- Lions Club donated \$23,000 for purchase of 2 or 3 cribs

**September 23-29:** Tim Horton's Smile Cookie Campaign

- Volunteers from WHF decorate cookies at Tim Horton's
- Proceeds towards family room in the long term care unit
- Raised \$10,760 for "Pediatrics"

**October 26:** 6th Annual Wetaskiwin Health Foundation Barn Dance & Pie Social

- Drill Hall
- Entertainment: Country singer Jack Jackson
- Live auction: 7 day Alaska Cruise, Wayne Gretzky jersey
- Cash Bar, Silent Pie Auction, Raffle
- All proceeds to benefit: Long Term Care - Family Room
- Raised over \$45K

WHF Pancake Breakfast, 2012

2011 WHF Mission Statements:  
"Providing Healthcare Support for your Community" & "Celebrating 25 Years"





## Palliative Suite in Long Term Care Completed in 2015

### 2014

**March 3:** Unveiling of WHF's new Donor Wall (main hospital lobby)

- Included a hands-on feature: electronic donor book
- Donor wall includes names of donors of a minimum of \$5K
- Since its establishment in 1986, WHF has dispersed approx. \$4.25 million into leading edge technology and patient care enhancement

**July 25:** WHF meets Health Minister

- Members of WHF board and staff met with MLA Verlyn Olson and Health Minister Hon. Fred Horne to discuss partnerships and funding between foundations and AHS

**August:** Annual Show & Shine at Long Term Care



**August:** Wetaskiwin Parade - 1st Place in Service/Church Group Category

**September:** Tim Horton's Smile Cookie Campaign

- \$11,240 raised

**October 1:** Newspaper ad seeking to fill Executive Director position

**November:** New Palliative suite in LTC was completed

- Cost \$149,067
- Grand Opening

**November 1:** 7th Annual Barn Dance & Pie Social

- Drill Hall
- 220 in attendance
- Entertainment: Canada's "New Country" Gentleman Jack Jackson
- Live auction: 11 Night Eastern Mediterranean Cruise
- Cash bar, silent pie/dessert auction, raffle
- All proceeds to benefit: long term care - Palliative Suite

March 2015:  
Executive Director  
Lillian Dykes  
retires after 7  
years with the  
Foundation

# 2008-2014 DONORS

Donations over \$5,000

- Alberta Health Services
- Alberta Health Services Finance
- Arthur Hauser
- Audrey Reynolds
- Benevolent & Protective Order of the Elks #91
- Bioxham's Windy-Ho Evergreens
- Byron Reynolds
- Canadian Horizontal Drilling Inc.
- Carl Primus
- Carol Blair & Associates Inc.
- CH & HC Leduc
- Charles Deliyannides
- Charles Dowswell
- CIBC
- Colin McKeag
- Colonel Hockey Club
- Constable Joe Agostino Memorial Golf
- CQI Team
- Dana Ryffel
- Dave Speth
- Dorothy Thomas
- Dyck Insurance Agency (Wetaskiwin) Ltd.
- Elida M. Goin
- Erven Heinz
- Estate of Georgia Blanch
- Estate of Gweneth Ada Whitmore
- Estate of John Frederick Walker
- Estate of Kathleen Mae Hoepfner
- Estate of Ruth Miller
- Ethel Rodgers
- Eveline Miasnikoff
- Forster Nurseries
- Frederick Lehmann
- Friends of the Community of Wetaskiwin Society
- Gladys Aboussafy
- Government of Canada
- Government of the Province of Alberta
- Grant Thornton LLP
- Harold Simonson
- Home Hardware Stores Ltd
- Hugh Denham
- Hutterian Brethren Church of Pine Haven
- Investors Group
- Jack Ensign
- Jan San Developments Ltd.
- Jay Goin
- John A. Maude
- John Maude and Susan Quinn Charitable Foundation
- Joyce Nelson
- Lakedell 4-H Beef Club
- Leavert Johnson
- Leduc Foundation Gift Shop
- Leduc General Hospital Ladies Auxiliary



- Leduc Order of the Royal Purple
- Levi Strauss Co Inc
- LGH Ball Tournament Committee
- Lillian Dykes
- Magnum Mechanical Systems Ltd.
- Manluk Industries Inc.
- Marion Wilson
- Mary Morrison
- Millet Legion #229
- Morley Blanch
- Normanna Lodge #595 Sons of Norway
- Pacific Western
- Parkview Farms
- Patricia Ganske
- Peter Zak
- Qualico Developments
- RBC Foundation
- Reta Elder
- Robert Gummow
- Ronald McDonald House Charities
- Shirley Lindahl
- Simon P. Ward Prof. Corp.
- Smile Cookie Campaign
- Speth Drilling (1989) Ltd.
- TD Canada Trust
- The Representative
- Wayne Astle
- Wetaskiwin Lodge #15 A.F. & A.M.
- Wetaskiwin Credit Union
- Wetaskiwin Emergency Medical Services Ltd.
- Wetaskiwin Fire Department
- Wetaskiwin Health Care Staff Association
- Wetaskiwin Healthcare Auxiliary
- Wetaskiwin Hospital & Care Centre
- Wetaskiwin Hospital Staff
- Wetaskiwin Institutional
- Wetaskiwin Lions Club
- Wetaskiwin Loyal Order of the Moose #1559
- Wild Rose Foundation
- William Hendriks
- Women of the Moose Wetaskiwin Chapter No. 559



John Maude & Susan Quinn Charitable Foundation Donation, 2010;  
Wetaskiwin Lions Club Donation, 2013

# DONOR-FUNDED PURCHASES

(Not a Complete List)

## 2008

- Colonoscopy scope

## 2009

- 2 Ultra sound machines
- 2 Rhinoscopes
- Laboratory fridge
- Lab chair
- Instruments for Obstetrician & Gynecology
- Colonoscopies (\$39,000 each only a 5 year life span)
- 2 over head surgical lights

## 2010

- Operating room lights
- Cataract surgery equipment
- Rigid Pro Press
- Chain saw, Leaf blower, Rototiller
- 3 floor lifts

# PROJECTS

- 3 sit/stand lifts, plus slings
- 2 lab collection carts
- 25 Christmas trees for the hospital

## 2011

- Help purchase Bariatric Bed

## 2012

- 11 new beds
- 6 new recliners LTC

## 2013

- Snow blower
- Staff fridge
- Seimens E-xcell Auto Validator (Lab)
- 1 Arjo walker for the Physio Therapy
- Tonomoter

## 2014

- 107 Dressers
- Pediatric crib
- Waiting room chairs & TV with DVD Community Health Unit
- MIS Instrument Rack
- Ergo meter with adjustable table
- 3 Automatic doors for LTC
- Transducer & software upgrades
- 3 stretchers for DI
- Neonatal Heart monitor

### 2008/2009:

- Phase 1 Surgical Services Expansion \$401,000
- Pediatric Children’s Play Area Renovation \$30,000

2009/2010: Operating Room Campaign \$412,000

2010/2011: Women's Health -

-Obstetrical & Gynecology \$385,000

2011/2012: Senior Health & Wellness \$268,600

2012/2013: Phase 2 - Surgical Program Enhancement \$231,000

2013/2014: Long Term Care - Family Room - Palliative Suite \$150,000

2014/2015: New CT Scanner



2008-2014

# BOARD MEMBERS

- Rob Park: Vice Chair, Chair (2004-2011)
- Morley Blanch: Vice Chair, Treasurer (2005-2008)
- Patti Ganske (2006-2010)
- Cec Colwell (2006-2008)
- Lillian Dykes (2007-2008)
- Dana Ryffel (2007-2011)
- Murray Warnke: Chair, Vice Chair (2008-2014)
- Donna Andres: Secretary (2009-2014)
- Danny Gavin: Treasurer (2009-2015)
- Branin McLeod: Secretary, Chair (2009-present)
- Brenda Halter (2010-2016)
- Allan Halter: Vice Chair (2010-2016)
- Tracy Mauch (2010-?)
- Ken Ball (2011-2015)
- Milton Okeymow (2011-2012)
- Claudette Yellowbird (2012-2014)
- Fern Broz: Treasurer (2012-2015)
- Amy Dreichel (Young): Secretary (2013-2015)
- Dr. Stiaan van der Walt: (2014-2015)
- Alanna Campbell (2014-2017)
- Russ Kuhn: Treasurer (2014-2016)



# STAFF

- Lillian Dykes: Executive Director (Feb.2010-Feb.2015), Development Officer (2008-2009)
- Linda Reid: Administration & Accounting (2007-2020)
- Colleen Zimmerman: Development Officer(2006-2008)
- Marilyn Plant: Casual Administrative (2009-?)
- Jennifer Cleland: Administrative (2013)
- Bonnie Scott: Casual Administrative (2014-2016)

WHF Board  
of Directors,  
2013



# MEMORIES

## 2008-2015



Tim Horton's Smile Cookie Campaign  
(above-Lillian Dykes on right), 2012



WHF 5th Annual Barn Dance at  
Drill Hall (top), 2012; 6th Annual  
Barn Dance (above), 2013



WHF Board of  
Directors,  
2010





2015 - 2021

# Modern Era

---

WHF Executive Director  
John Strong, 2021

**BY 2015, THE** Wetaskiwin Health Foundation saw the beginning of more changes as it said goodbye to one Executive Director and welcomed a new one. John Strong joined the WHF team in February and was tasked with the responsibility of finding new areas of growth in order to provide a stable and sustainable future for healthcare services in the Wetaskiwin area.

Under Strong's leadership, the Foundation began embracing larger and more ambitious capital campaigns, starting with the \$1.2 million dollar CT Scanner project. Over the next six years approximately

\$10 million dollars was raised for the Foundation, and many hospital departments and healthcare services have directly benefited from these efforts. Other major projects included Maternal and Infant Health, improvements to the Emergency Department and Dialysis Unit, as well as the addition of an Endoscopy Suite to the Wetaskiwin Hospital and Care Centre. As the Wetaskiwin Health Foundation looks to the future, it will strive to continue fulfilling its role to raise funds and enhance health services for residents of Wetaskiwin and surrounding areas.

# TIMELINE

## 2015 - 2021

### 2015

**February:** John Strong hired as new Executive Director

**April 1:** Announcement for Fundraising Campaign for new CT Scanner

- New campaign will run from April 2015-August 2016
- Largest WHF fundraising campaign to date
- \$1.2 million fundraising goal for the scanner
- goal to open for 30 year anniversary of WHF in 2016
- First CT Scanner campaign 10 years ago in 2005
- Old CT Scanner needs replacing
- Approximately 4100 scans in 2014

**April 30:** Hospital Staff raise \$20,000 from a Staff 50/50 Draw (towards CT Scanner)

**June 5:** Wetaskiwin Health Foundation Health Classic Golf Tournament

- Montgomery Glen Golf Course
- 36 Golfers in attendance
- First golf tournament since 2005
- \$5781.28 raised for new CT Scanner

**July 9:** Official Opening of 2 new rooms in Hospital

- WHF committed to fundraising for this 1 year ago
- Palliative Suite and Family Room to Long-Term Care Unit

**October 22:** WHF recognized as the recipient of the 2015 Non Profit of the Year at the Business Awards Gala

**August 20:** 3rd Annual Show & Shine

- Long-Term Care
- WHF hosted free BBQ
- Over 30 cars, trucks, and bikes on display

**September 18:** Thank You Event to honor donors of the Foundation

**November 7:** 8th Annual Barn Dance & Pie Social

- Drill Hall
- Over 500 in attendance, largest attendance so far
- Tequila Gold Band
- Country Christmas theme
- 96 silent auction items, 9 live auction items (largest item: Alaskan Cruise), cash bar, raffle
- Approx \$84,000 raised
- Closer to CT Scanner purchase goal (\$770,000 towards \$1.2 mil)

**December:** Long-Term Care Christmas

- WHF staff handed out gifts to residents, sang carols, and visited



Chamber of Commerce Awards Gala (WHF represented by John Strong - 4th from top left), October 2015





## NEW CT SCANNER AT THE WETASKIWIN HOSPITAL & CARE CENTRE

April 20, 2016: Official  
Opening & Ribbon  
Cutting Ceremony

Fundraising Campaign for new CT  
Scanner:

- Campaign duration: April 2015-  
August 2016
- Largest WHF fundraising  
campaign to date
- \$1.2 million fundraising goal for the  
scanner
- Goal to have it finished for the 30  
year anniversary of WHF
- 2005 was first CT Scanner  
campaign, and now it needs  
replacing
- Approximately 4100 scans in 2014



## 2016

- 2016/2017 Fundraising Campaign:  
Maternal & Infant Health \$300,000

**March 1:** New CT Scanner installed in  
the Wetaskiwin Hospital and Care  
Centre

**April 20:** Official Opening - CT Scanner

**June 10:** Wetaskiwin Health  
Foundation 14th Charity Golf  
Tournament

- Montgomery Glen Golf Course
- Buffet breakfast, 18 holes, steak  
dinner banquet, 144 players

**July 2:** WHF 30th Birthday BBQ

- Drill Hall
- Velcro Wall/Games

**August 10:** Wings & Wheels Lottery  
Launched

- Partnership with Black Gold Health  
Foundation, Leduc

**August 17:** Long Term Care Show &  
Shine

- Antique, muscle, or brand new cars
- WHF hosting BBQ
- Tim Hortons: coffee & donuts
- Entertainment: Elvis



WHF 30th Birthday BBQ Celebration (both), July 2, 2016

## 2016

**September 13:** Announcement of WRPS Healthy Food Programs

- WHF providing \$12,500 in grants to local high schools

**September:** Donor Appreciation Event

- Best Western Wayside Inn
- Announced new Maternal & Infant Health Campaign (to raise \$300K), campaign will run from Sept.2016-May 2017 Mothers day

**November 5:** 9th Annual Barn Dance & Pie Social

- Drill Hall, Live auction
- Over 400 attendees
- Raised approx. \$64,000
- Entertainment: Winnipeg's Sean Burns Band

## Wetaskiwin Health Foundation celebrated 30 Years in 2016

**December:**

- Surgical Campaign completed (raised \$400,000)
- Christmas appeal (raised over \$26,000) for Senior Wellness

## 2017

- Fundraising Campaign: Improvements to the Emergency Department and Dialysis Unit of the Wetaskiwin Hospital & Care Centre \$425,000

**May 16:** Free Estate Planning Workshop

- Reynolds Alberta Museum



**June 3:** Inaugural Wetaskiwin Triathlon  
Not a fundraiser, community promotion event

- WHF partnered with Multisports Canada to run the competition
- Alberta Triathlon Association sanctioned event
- 89 competitors signed up

**June 9:** 15th Annual Wetaskiwin Health Foundation Charity Golf Event

- Black Bull Golf Resort
- Breakfast buffet, steak dinner, prizes

**August 17:** Annual Show and Shine

- Old cars and trucks at Long-Term Care Parking lot (confirm year)
- BBQ, Elvis impersonator

**August 23:** WalkABLE Wetaskiwin

- WHF donated a park bench at By-the-Lake Park

**November 25:** 10th Annual Country Christmas Barn Dance

- Cocktails, dinner, silent auction
- Jaimie Woodfin Band

## 2018

- 2019-2020 phase 2 of Emergency Upgrades \$300,000

**June 2:** 2nd Annual Wetaskiwin Triathlon

- Manluk Centre
- WHF partnered with Multisports Canada
- 116 Racers, 25 from Wetaskiwin

**June 22:** Wetaskiwin Health Foundation's 16th Annual Charity Golf Event

- Black Bull Golf Resort
- Individual golfer \$100, team of 4 \$400

## First WHF Triathlon in 2017

Annual Show and Shine (bottom left), c.2017;  
WHF Triathlon (right), June 2017



**August:** 6th Annual Show & Shine - Long-Term Care event hosted by WHF

**November 3:** 11th Annual Wetaskiwin Barn Dance

- Drill Hall
- Live music, dinner, kids corner, silent auction, raffle trip to Nashville, and a mechanical bull
- Proceeds: Emergency Department

**November 20:** Estate Planning Workshop at RAM

## 2019

**February:** 1st Annual WHF Teddy Bear Drive

- Collected over 500 stuffed animals for children at the Wetaskiwin Hospital & Care Centre

**June 1:** 3rd Annual WHF Triathlon

- 153 athletes completed

**September 23:** "Reminisce" Thank You Event

- Montgomery Glen Golf & Country Club
- Purpose: acknowledge and archive the significant contributions made by all Board Members and Healthcare Liaisons to the Foundation since its inception, with special recognition to the original founders

**November 2:** 12th Annual Wetaskiwin Barn Dance

- Drill Hall
- Live band Jamie Woodfin
- Auction
- Kids corner
- Mechanical bull riding
- Proceeds towards ER Updates

## Health Classic Golf Tournaments

WHF 13th Annual Health Classic Golf Tournament (both), 2015







Wetaskiwin Lions Club Donation to WHF, 2016



## 2020

- New Capital Campaign: Endoscopy Suite in the Wetaskiwin Hospital and Care Centre \$525,000
  - Currently the Wetaskiwin Operating Rooms performs 600 endoscopy procedures every year.
  - With these upgrades the Operating Rooms and Endoscopy Suite will be able to run simultaneously, increasing the capacity by 3-4 times and reduce the need for residents to travel elsewhere for procedures.
  - will be named the Wetaskiwin Health Foundation Endoscopy Suite upon completion

**March: Many events were cancelled in 2020 due to COVID**

**Barn Dance Online Auction:**

- Held in lieu of WHF's signature fundraising event in 2020 due to the restrictions which resulted from COVID-19
- raised just over \$8,000
- These funds helped purchase 2 new blanket warmers for the Wetaskiwin Hospital & Care Centre

## 2021

- Current Campaign: Endoscopy Suite
- Triathlon cancelled for 2021

**June 5: Resilience Run**

- Manluk Centre
- Mental health awareness
- 1km, 5km, 10km runs/walks

**August 27: Annual Golf Tournament**

# 2015-2021 DONORS

Donations over \$5,000

- Allard Foundation
- Arthur Shantz
- Baker Funeral Chapel
- Benevolent & Protective Order of the Elks #91
- Bruce Ganske
- Calvin Trost
- Carol Blair & Associates Inc.
- Carol Neilson
- David Hewko
- Donna L. Siler
- Dyck Insurance Agency (Wetaskiwin) Ltd.
- Elida M. Goin
- Erika Gusse
- Erven Heinz
- Estate of Erna Freiman
- Estate of Ethel Edith Jensen
- Estate of Heinz Hallex
- Estate of John Norman Johnson
- Estate of Lillian Sanden
- Estate of Mervin Snyder
- Estate of Thomas Edmond Christopher
- Grace Sjolin
- Hugh Denham
- Hutterian Brethren Church of Pine Haven
- Jay Goin
- John Maude and Susan Quinn Charitable Foundation
- Katepwa Farms Inc
- Kinsmen Club of Wetaskiwin
- LightHouse Fellowship
- Lions Club of Pigeon Lake
- Manluk Industries Inc.
- Mawer Investment Management
- Mulhurst Legion
- New Country 98.1
- Patricia Ganske
- Philip Nash
- Ruby Knight
- Shirley Lindahl
- Shirley's Travel - TPI
- Sigurd Nielsen
- Supreme International Limited
- The Estate of Catherine Vivian Lee
- Tuhin K. Bakshi
- Two Hills Health Centre Society
- Vasa Lodge of America Order #575
- Wawanesa Insurance
- Wetaskiwin Lodge #15 A.F. & A.M.
- Wetaskiwin Co-operative Association Ltd.
- Wetaskiwin Community Transportation Society
- Wetaskiwin Healthcare Auxiliary
- Wetaskiwin Hospital & Care Centre 50/50 Raffle
- Wetaskiwin Lions Club
- Wetaskiwin Loyal Order of the Moose #1559
- Women of the Moose Wetaskiwin Chapter No. 559



# DONOR-FUNDED PURCHASES

(Not a Complete List)

## 2015

- Skid Steer
- Portable Dental Cleaning Unit
- Walker
- Jordan Lounge Sleepers
- Lifts
- Stretchers
- Sit Stand Trainer
- Ice & Water Dispensers
- Syringe Pump
- Fridge
- Endoscopic CO2 Regulation Unit
- Wheelchairs
- Beds & Mattresses
- Portable Lead Screen
- Cast Cart
- Portable ECG Machines
- Commercial Clothes Washer)
- Floor Scrubber

- Hand-Held Ultrasound
- Baby Warmer
- Blood Pressure Cuffs
- Acute Care Beds
- Child Rehabilitation Devices
- Breast Pump
- Pediatric Examination Table
- Electric Tonometer

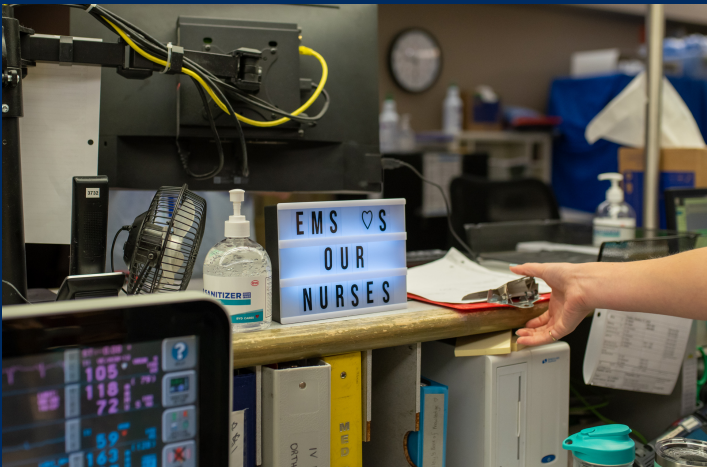
(the Foundation spent a total of \$909,361.57 on equipment in 2015)

## 2016

- CT scanner
- Neonatal Resuscitator - Obstetrics
- Home care treatment tables
- Physio treatment tables
- Long Term Care Bus
- IV pumps

## 2017-2018

- Code response carts
- Glidescope
- Fresenius Dialysis Chairs
- Follett Ice Machine
- C 8 Transducer
- ETAC Turner



# STAFF 50/50 DONATIONS TOWARDS CT SCANNER PURCHASE, 2016



## DONOR-FUNDED PURCHASES (Continued)

### 2017-2018

- Fresenius Dialysis Chairs
- Follett Ice Machine
- C 8 Transducer
- ETAC turner
- Imaging Chair
- Papoose small
- Papoose Regular
- Slings x 3 (M, L, XL)
- Bariatric Portable Lift
- Portable Exam Light
- Vein Finder for IV Stats
- Vital Sign Monitors
- Ice/Water Dispenser
- Traction Bed
- Bariatric Plinths
- Ergatron Single Sit & Stand Work Station
- File Buddy Stool
- Hydrocollator
- Air Mattress
- Steris Cart

- Bariatric Treatment Table
- Assessment Tools
- Viking Lift
- Sabina Lift
- Lifts: 1 Sabina; 1 Viking

### 2018-2019

- Bariatric Commode
- Non Slip Tile - Holding Unit
- Seating/New Chairs - Waiting Room
- Flooring Repairs
- Painting: Emergency Area, Gift Shop, Lobby
- Ice Machine
- Colposcope
- Radiometer
- Vital Signs Monitor
- Seating upgrades
- Vascular Doppler
- Recliners
- SP02 Monitor
- Hi/Low Bed with Mattress





## WETASKIWIN HEALTHCARE AUXILIARY DONATION, C.2018

### DONOR-FUNDED PURCHASES

(Continued)

#### 2019-2020

- Blanket Warmer
- Seating/New Chairs: Waiting Room, Main Lobby, Ambulatory Care
- Wheel Chairs
- Med Carts x 2
- Rehab Abby
- Sleeper Chairs
- Blanket Warmers
- Over Bed Tables
- Washer and Dryer
- Blanket Warmers
- Broda Chair
- Stirrups
- Lock Boxes

## PROJECTS

2015/2016: New CT Scanner (\$1.2 million fundraising goal for the scanner)

2016/2017: Maternal & Infant Health \$300,000

2018/2019: Improvements to the

Emergency Department and Dialysis Unit \$425,000

2019/2020: Phase 2 of Emergency Upgrades \$300,000

2020/2021: Endoscopy Suite \$525,000

2015-2021

# BOARD MEMBERS

- Bill Elliott: Chair, Vice-Chair, secretary (2016-Present 2021)
- Branin McLeod: Secretary, Chair, Vice Chair, (2009-Present 2021)
- Peyasu Wuttunee: Secretary (2018-2021)
- Anna-Marie Wyse: Treasurer (?-Present 2021)

- Carol Neilson: (2017-Present 2021)
- Pattie Ganske: (2020-Present 2021)
- Shirley Lindahl: (2015-Present 2021)
- Lee Fredeen-Kohlert: Vice chair (2016-Present 2021)
- Tanya Hunerfauth: (2015-2021)
- Bernice Chambers: (2020-Present 2021)
- Cory Coyne: (2019-Present 2021)
- Diane Denham: (2019-Present 2021)
- Kristina Johnson: (2020-Present 2021)
- Joanne Shantz: (2021-Present 2021)
- Trevor Bearchell: (2021-Present 2021)



# STAFF

- John Strong: Executive Director (Feb.17, 2015-Present 2021)
- Linda Reid: Administrative & Accounting (2007-2020)
- Bonnie Scott: Casual Administrative (2014-2016)
- Linda Callahan: Event Specialist (2015-2017)
- Shawna Morrell: Financial Officer (2017-Present 2021)
- Kristy Irving: Marketing Manager (2017-Present 2021)
- Patty Caputo: Program Specialist (2016-2017)



WHF Board (top left), c.2015; WHF Staff (bottom left) with ED John Strong on left, 2016



# MEMORIES

2015-2021



WHF 3RD ANNUAL  
TRIATHLON - 2019







# 12TH ANNUAL WETASKIWIN BARN DANCE 2019







## WETASKIWIN HEALTH FOUNDATION

# Conclusion

---

### AS 2021 MARKS

the 35 year anniversary of the Wetaskiwin Health Foundation, the production of an up to date history of the organization was made a priority by both the WHF Board and Staff. As we have seen, the Foundation has transformed over the years from a small fledgling organization to a robust operation that has reshaped

healthcare services in the Wetaskiwin area. It is important for the Foundation to recognize the many contributions and donations that have made it into what it is today. As the local community continues to support the Wetaskiwin Health Foundation, we anticipate further growth and look forward to what the future holds for all of us.

A special thanks to all of our donors and to everyone who has contributed to advancing healthcare services in the Wetaskiwin area over the years



Wetaskiwin Hospital & Care Centre, July 2021