



Wetaskiwin
HEALTH FOUNDATION

*Your Community
Your Health
Your Foundation*

www.wetaskiwinhealthfoundation.com

like us on



780-361-4130
780-312-3663

90% of every donation goes directly to Healthcare in Wetaskiwin

Wetaskiwin
Health Foundation

6910 - 47 Street
Wetaskiwin AB
T9A 3N3

ANNUAL REPORT

2021-2022

OUR MISSION

“We raise funds, together with our communities, to support the provision of programs, equipment, and technology to enhance the health and well-being of residents in the City and County of Wetaskiwin, and surrounding areas.”

OUR VISION

***“Your Investment.
Your Health Services.
Close to Home.”***

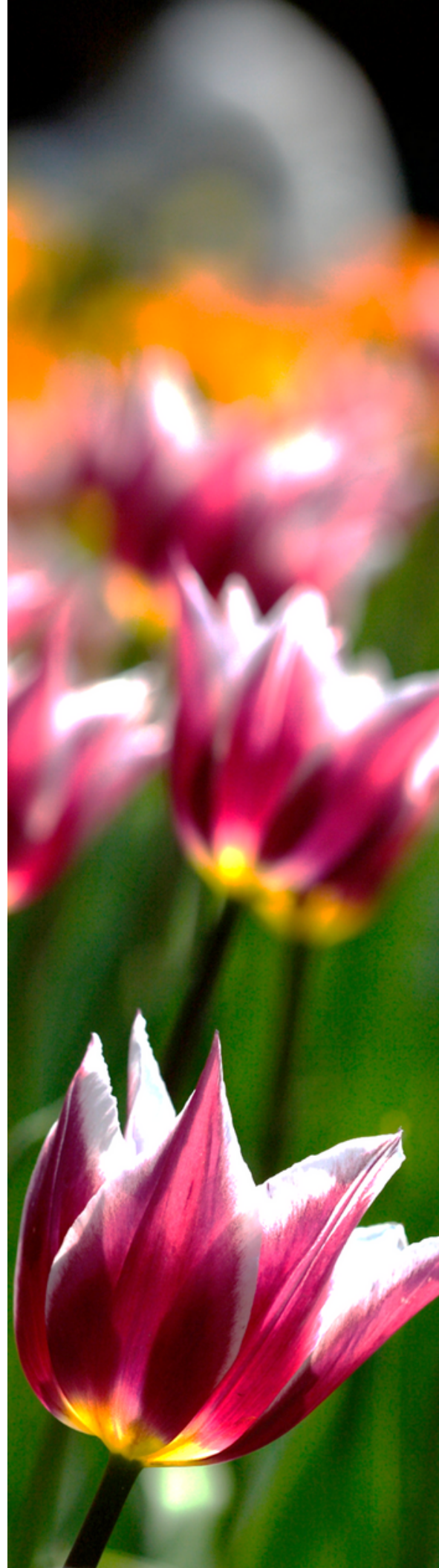


TABLE OF CONTENTS

04	LEADERSHIP MESSAGES
07	DONOR DIFFERENCE
08	CAPITAL CAMPAIGN
09	CAPITAL PROJECT
10	FUND REPORT



BOARD OF DIRECTORS 2021-2022

BRANIN MCLEOD, *CHAIR*

LEE FREDEEN-KOHLERT, *VICE CHAIR*

ANNE- MARIE WYSE, *TREASURER*

BILL ELLIOT, *SECRETARY*

CAROL NEILSON

SHIRLEY LINDAHL

DIANE DENHAM

CORRY COYNE

BERNICE CHAMBERS

PATTIE GANSKE

KRISTINA JOHNSON

JOANNE SHANTZ

TREVOR BEARCHELL



A MESSAGE FROM OUR BOARD CHAIR

"A leader is one who knows the way, goes the way, and shows the way."

- John Maxwell

"If your actions inspire others to dream more, learn more, do more, and become more, You are a Leader."

- John Quincy Adams

"It's not how much we give, but how much love we put into giving."
Mother Teresa

On behalf of the Wetaskiwin Health Foundation Board, I would like to sincerely thank all of you who supported, and continue to support, our efforts to enhance Health Care services in our community in 2021.

Your kindness and generosity is helping us to make a big difference in quality patient care at the Wetaskiwin Hospital and Care Centre and healthcare services in the local area.

"Alone we can do so little; together we can do so much." Helen Keller

I would like to thank John Strong for his positive leadership and vision. Through the many challenges caused by the second year of the pandemic, John has provided excellent guidance to the Board and made the difficult decisions regarding our staffing complement. Thank you, also, to the staff for your dedication, understanding, and patience.

Thank you to the Board of Directors who, through various committees, Board meetings, and virtual Foundation events, give tirelessly of their time to ensure that priority projects are completed in the most cost-efficient way.

We are very sad to bid farewell to Anne Marie Wyse, Bill Elliot, and Diane Denham, and sincerely want to thank them for their many years of dedicated caring service and commitment to the Foundation Board. They will be missed.

Thank you for all that you do to make our community a healthy place to live, learn, and recreate.

Branin McLeod
Board Chair, Wetaskiwin Health Foundation

A MESSAGE FROM OUR EXECUTIVE DIRECTOR

"Hope can be a powerful force. Maybe there's no actual magic in it, but when you know what you hope for most and hold it like a light within you, you can make things happen, almost like magic."

– Laini Taylor

Often as a parent I ask myself what will be the legacy I leave for my children? Will I make the world a better place? Will they live an easier or better life than I did?

As the Executive Director I ask very similar questions. What will the legacy be of my time at the Foundation, will healthcare be better when I leave than when I arrived. Will my community be a better place because of the work we do on a daily basis?

I hope that all the answers to those questions will be positive.

This year I have really focused on hope, not just in those questions but in making a difference. We have seen hard times and continue to see struggles in the lives of so many we know and love. I have though through it all been inspired by the generosity and dedication of so many.

As the pandemic began, we invited people to join with us in making a difference. Hundreds of you answered that call and have truly made a difference. We have seen 2 strong years of support and donations to help achieve our vision of high-quality healthcare close to home. One cannot truly express the gratitude I feel when I see all the love and support for this community. There are so many who give so much and are so dedicated to leaving behind an amazing legacy for the next generation.

I am so grateful to be inspired by our loyal and generous donors. Thank you for all you do. This year you have helped us finish 2 campaigns as well as purchase many needed equipment items.

As we move forward, we will be undertaking our largest and most vital campaign in our 37-year history. I invite you to continue to make a difference and leave a lasting legacy in our community.

John Strong
Executive Director - Wetaskiwin Health Foundation

"It is our job to make a difference and leave the world a better place."
- Karol G

HEALTHCARE HEROS

Navigating a global pandemic has been tough, but we are tougher.



***"Heroes are not giant statues framed against a red sky.
They are people who say: 'This is my community, and it's my
responsibility to make it better.'"***

-Tom McCall

THE DONOR DIFFERENCE



339
Active
Donors



981
Gifts



\$695K
Donor
Dollars

EQUIPMENT PURCHASES

mini Vidas
for the Laboratory

30 Mattresses
for LTC

Bladder Scanner

Transfer Board

Digital Clocks

PROJECTS

Endoscopy Suite
Capital Campaign

Indigenous Cultural Suite
Campaign



CAPITAL CAMPAIGN

Wetaskiwin Health Foundation Endoscopy Suite

The Wetaskiwin Health Foundation announced a new campaign in 2020, with the focus on the addition of an Endoscopy Suite to the Wetaskiwin Hospital and Care Centre's Surgical Unit.

We are so pleased to announce that on March 31st 2022 we reached our fundraising goal of \$525,000 and were able to officially mark this Campaign as complete.

The consistent support of our community truly speaks volumes, and we know that together we are building a legacy of high-level healthcare.

Currently the Wetaskiwin Operating Rooms performs 600 endoscopy procedures every year. With these upgrades the Operating Rooms and Endoscopy Suite we will be able to run both simultaneously, increasing the capacity by 3-4 times and reduce the need for local residents to travel elsewhere for procedures.

Purchased Equipment

- Two lights-one monitor ceiling mount
- OCI UPD-3 and SDI Cable
- Scope-Guide Remote Control
- Video Printer and Cables
- Slim colonoscope
- High-def therapeutic gastroscope
- Monitor
- 4K video tower
- 4k Work station
- Laparoscopes
- Media recorder and printer
- Intubation videoscope



CULTURAL SUITE CAMPAIGN

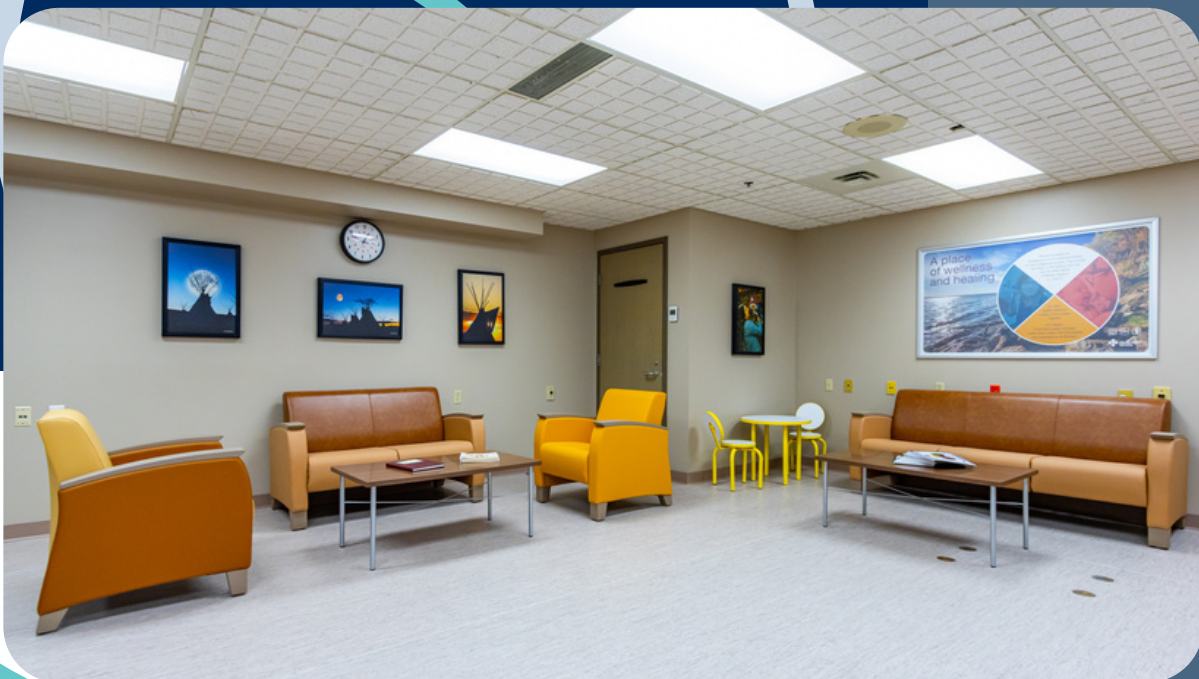
Onanatawihowewin kamik "The Healing Room"

The Wetaskiwin Health Foundation announced a new Campaign in the fall of 2020 where we partnered with Indigenous Health Services to relocate and improve upon the Indigenous Cultural Area within the Wetaskiwin Hospital and Care Centre. This was a \$70, 000 Campaign dedicated to supporting fair and equal access to health services for everyone in Wetaskiwin.

We are incredibly grateful and proud of our community for stepping up and showing that this was a project supported by all, and because of our community's generosity we were able to successfully complete this Campaign in March 2022.

An official Grand Opening ceremony was held on July 21st, 2022 - National Indigenous Peoples Day.

Access to health care should not be limited by race, socio-economic status, gender identity, or cultural identity. AT the Wetaskiwin Health Foundation, we are working diligently to take action to identify and break down barriers to support fair and equal access to health care services.



FUND REPORT

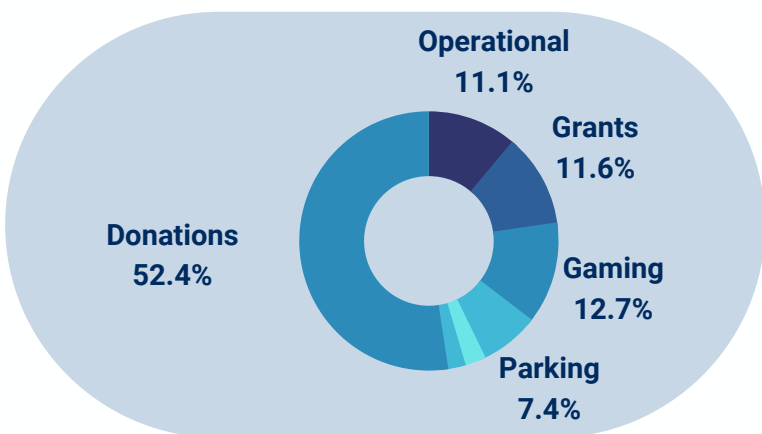
FUNDRAISING 2021-2022

WETASKIWIN

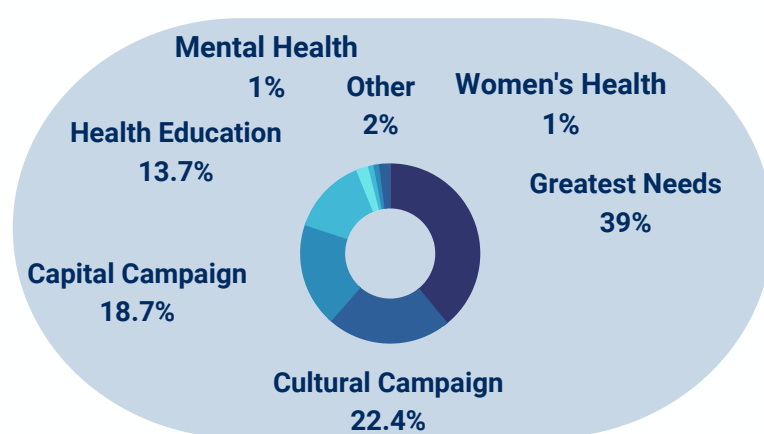
FUND	OPENING BALANCE	DONATIONS	PURCHASES	PLEDGED EQUIPMENT	CLOSING BALANCE
Acute Care	\$6,059.68	\$195.00	\$250.00	\$0.00	\$6,004.68
Annual Appeal	\$0.00	\$26,915.00	\$0.00	\$0.00	\$2,087.96
Capital Campaign	\$480,907.78	\$107,221.08	\$243.44	\$474,636.44	\$175,001.14
Children's Health	\$2,860.72	\$0.00	\$0.00	\$0.00	\$2,860.72
Community Health	\$1,437.55	\$500.00	\$60.00	\$0.00	\$1,877.55
Donor Legacy Fund	\$25,037.31	\$50,292.56	\$0.00	\$0.00	\$75,329.87
Greatest Needs	\$119,543.52	\$24,147.15	\$55,787.86	\$32,900.00	\$55,002.81
Greatest Needs - Frontline	\$14,062.48	\$542.29	\$15,396.69	\$0.00	\$0.00
Health Education	\$31,054.92	\$19,766.76	\$24,498.62	\$0.00	\$26,323.06
Health Promotion	\$1,669.45	\$333.00	\$0.00	\$0.00	\$2,002.45
Legacy Fund	\$2,113,455.96	\$33,240.94	\$142,478.40	\$0.00	\$2,004,218.50
Long-Term Care	\$30,609.93	\$30,598.36	\$61.48	\$11,239.00	\$49,907.81
Mental Health	\$5,122.66	\$2,620.05	\$1,000.00	\$0.00	\$6,742.71
Palliative	\$45,353.68	\$2,975.00	\$0.00	\$0.00	\$48,328.68
Recreation Therapy	\$2,385.60	\$3,000.00	\$4,061.44	\$0.00	\$1,324.16
Religious/Cultural	\$3,724.44	\$36,248.48	\$39,972.92	\$0.00	\$0.00
Seniors Health	\$0.00	\$175.00	\$0.00	\$0.00	\$175.00
Womens Health	\$16,516.19	\$1,000.00	\$1,022.39	\$0.00	\$16,493.80

Please note that not all funds/accounts are represented in the above chart

INCOME



SPENDING



2021-2022 AUDITED FINANCIAL STATEMENTS

On June 15th, our Independent Auditors; Rowland, Parker, & Associates, issued an audit report on the financial statements of the Wetaskiwin Health Foundation for the year which ended March 31st, 2022. The following information summarizes the financial position, as well as the operations and changes in fund balances for the fiscal year of 2021-2022.

WETASKIWIN HEALTH FOUNDATION		AS AT MARCH 31	
Summary of Financial Position			
	2022	2021	
ASSETS			
CURRENT			
Cash	\$2,629,288.00	\$2,539,927.00	
Accounts Receivable	\$3,210.00	\$1,584.00	
Prepaid Expenses	\$17,381.00	\$10,357.00	
Due from Restricted Fund	\$14,971.00	\$6,307.00	
	\$2,664,850.00	\$2,558,175.00	
CAPITAL ASSETS	\$83,680.00	\$72,292.00	
LONG TERM INVESTMENTS	\$2,065,846.00	\$2,174,992.00	
	\$4,817,376.00	\$4,805,459.00	
LIABILITIES AND NET ASSETS			
CURRENT			
Accounts Payable	\$744,013.00	\$273,732.00	
Deferred Revenue	\$1,380.00	\$0.00	
Due to General Fund	\$14,971.00	\$6,307.00	
	\$760,364.00	\$280,039.00	
LONG TERM DEBT	\$40,000.00	\$30,000.00	
	\$800,364.00	\$310,039.00	
CONTINGENT GAIN			
NET ASSETS			
Unrestricted Assets	\$29,002.00	\$24,177.00	
Internally Restricted Assets	\$2,487,691.00	\$2,621,554.00	
Externally Restricted Assets	\$1,413,639.00	\$1,777,397.00	
Invested in Capital Assets	\$83,680.00	\$72,292.00	
	\$4,014,012.00	\$4,495,420.00	
	\$4,814,376.00	\$4,805,459.00	

2021-2022 AUDITED FINANCIAL STATEMENTS

WETASKIWIN HEALTH FOUNDATION		AS AT MARCH 31
Statement of Revenue and Expenditures		
	2022	2021
REVENUES		
Donations	\$695,273.00	\$572,284.00
Investments	\$236,127.00	\$234,672.00
Operations	\$169,159.00	\$79,230.00
Gaming	\$154,269.00	\$73,092.00
Grants	\$134,456.00	\$130,000.00
Government Assistance	\$46,828.00	\$100,380.00
Fundraising	\$27,619.00	\$4,522.00
Other	\$14,114.00	\$5,556.00
	\$1,477,845.00	\$1,199,736.00
EXPENSES		
Charitable Activities	\$1,187,794.00	\$480,067.00
Wages and Benefits	\$216,613.00	\$156,016.00
Fundraising and Advertising	\$196,290.00	\$99,709.00
Operations	\$74,755.00	\$41,040.00
General and Administrative	\$51,288.00	\$66,551.00
Investments	\$18,977.00	\$18,577.00
Amortization	\$13,585.00	\$12,835.00
	\$1,759,302.00	\$874,795.00
EXCESS (DEFICIENCY) OF REVENUES OVER EXPENSES FROM OPERATIONS		
	-\$281,457.00	\$324,941.00
OTHER INCOME		
Unrealized Gain (loss) on Investments	-\$199,951.00	\$162,867.00
EXCESS (DEFICIENCY) OF REVENUES OVER EXPENSES		
	-\$481,408.00	\$487,808.00
NET ASSETS - BEGINNING OF THE YEAR		
	\$4,495,420.00	\$4,007,612.00
Deficiency of Revenues over Expenses	-\$481,408.00	\$487,808.00
Capital Additions	\$0.00	\$0.00
Interfund Transfer	\$0.00	\$0.00
NET ASSETS - END OF YEAR		
	\$4,014,012.00	\$4,495,420.00



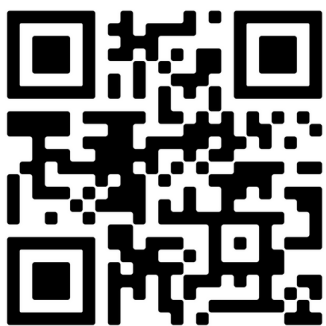
TO OUR DONORS, VOLUNTEERS, & PARTNERS IN HEALTH

THANK YOU

WETASKIWIN HEALTH FOUNDATION



Your Investment. Your Health Services. Close to Home.



WETASKIWIN HEALTH FOUNDATION

6910 – 47 Street

Wetaskiwin, AB T9A 3N3

Phone: 780-361-4130 Fax: 780-361-4107

Email: wetaskiwinhealth@gmail.com

Web: www.wetaskiwnhealthfoundation.com